



**4th Annual
Napa Climate Summit**

RESILIENT NAPA

March 26, 2026

Center for the Performing Arts, NVC



Landscape Resiliency

Rainer Hoenicke, Moderator



Comprehensive Wildfire Resilience for Napa County

Joe Nordlinger, CEO, Napa Firewise

NAPA COMMUNITIES FIREWISE FOUNDATION

Comprehensive Wildfire Resilience

Valley Stewards Initiative | Enhanced Resilience Site Framework



Mission & Impact

Our mission is to reduce the risk and impacts of wildfires by utilizing fire fuel reduction and community education programs in Napa County. We are achieving this through Fire Safe Councils, through local, state and federal grants and by educating our communities on topics such as defensible space, home hardening, and fire preparedness.

ACCOMPLISHED THROUGH 2025 – LARGELY WITH PUBLIC FUNDS

Over 5,000 total acres have been treated across various treatment methods.



2235 ACRES

of vegetation thinned or removed to serve as a fuel break



999 ACRES

of vegetation thinned by animal grazing



198 MILES

of dozer line fuel breaks



324 MILES

of roadside vegetation thinning



231 HOMES

Defensible Space costs defrayed



20 FIREWISE

Communities recognized by Firewise USA, more underway



2100

reflective address signs installed



23 FIRE SAFE

COUNCILS
Local community action supported

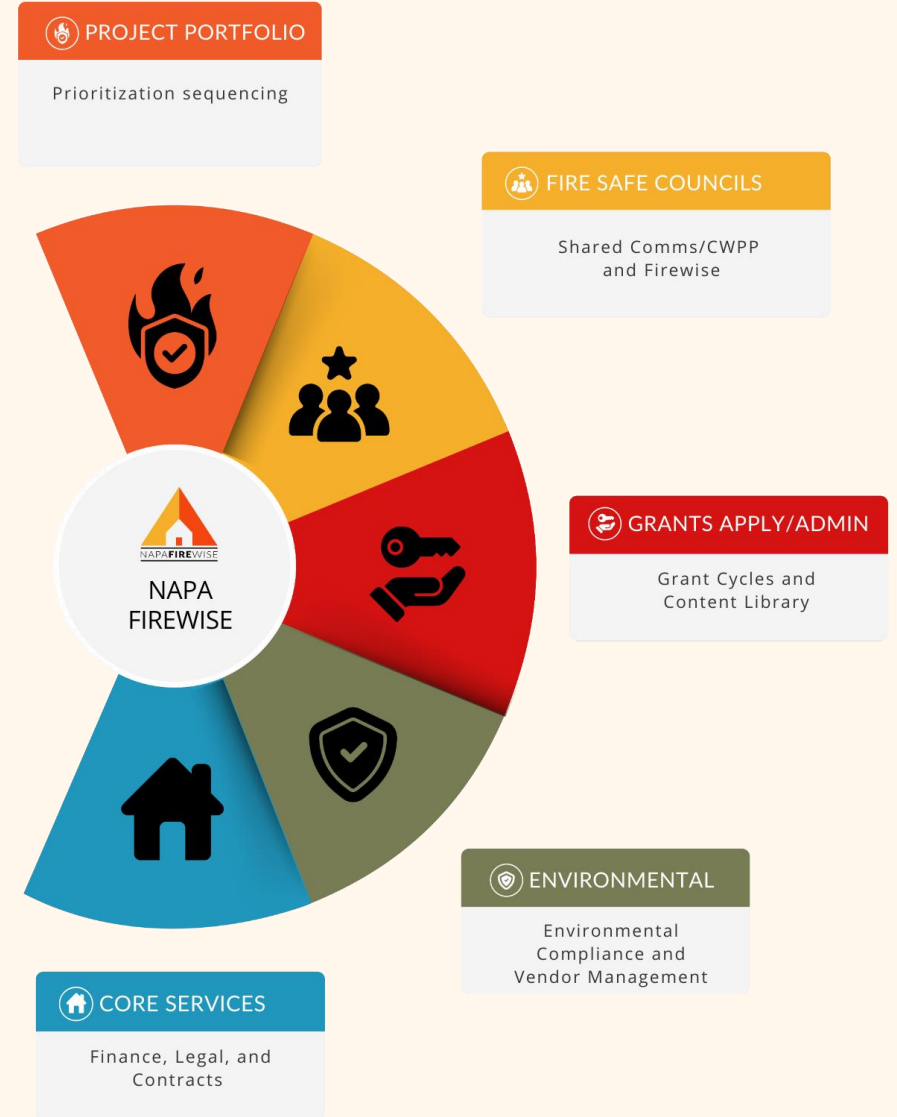
HOW WE WORK

Structural Efficiency

Vertical Integration through the Napa Firewise model. Delivering on the entire resilience value chain

END-TO-END PROJECT MANAGEMENT & ADVISORY FOR PRIVATE LANDS

- Provide full project delivery for private landowners
- Utilize Napa Firewise's project volume to drive predictable pricing, clear timelines, and quality standards
- Oversee implementation to ensure county and agency alignment
- Integrate completed projects into countywide mapping and response systems
- Link neighboring private and public land projects to avoid fragmented investments
- Use inclusion as a force multiplier—aligning private investments with public agencies, programs, and partner capacity to increase impact
 - *Partners include RCD, Land Trust NC, CAL FIRE, NCFD, NRCS*



How the Initiative Works

Developed in close coordination with **CAL FIRE LNU** and dozens of insurance carriers — guiding investments on private land and mapping critical assets for firefighters. This initiative will develop **250+ Enhanced Resilience Sites (ERS)** in three years while maximizing the return on public and private dollars.

1

WHO WE SERVE

Types of Landowners

- Those with means already invested in resilience
- Those who can do more with guidance
- Those who need financial support to begin

2

HOW ITS FUNDED

Funding Pathways

\$

Landowner Investments

\$

Grants & Cost-Share

\$

Philanthropy & Donations

3

THE OUTCOMES

Safer & Resilient Communities

- Resilience integrated across parcels
- Properties mapped into CAL FIRE systems
- Increased return on public & private dollars

Incident Case Studies



JULY 2024 Toll Fire

Held to 40 acres – no structures lost

- Adjacent to NCFF-built enhanced resilience site
- CAL FIRE staged along containment line as fallback
- Critical Lookout for aerial operations and ground crew insertion
- Project became a primary and adjacent containment line
- NCFF maintained dozer containment lines and the enhanced resilience of residents resulted in prompt containment



AUGUST 2025 Long Fire

Contained under 5 acres – no loss occurred

- Home & winery in ERS under development
- Landowner invested in water, fuel reduction & access
- Surrounding resilience elements mapped into Tablet Command
- Local firefighters pre-familiarized with ERS location



AUGUST 2025 Pickett Fire/Dutch Henry

Rapid containment – multiple ERS assets utilized

- Multiple NCFF and LTNC fuel reduction and containment line projects contributed to containment
- Surrounding resilience elements mapped into Tablet Command
- Battalion Chiefs pre-briefed on ERS assets along Dutch Henry, Ink Grade, Oat Hill Mine
- Firefighters used NCFF & landowner data to drive containment ops
- Several surrounding neighborhoods are under development as ERS locations.

INSURANCE OUTCOMES

Properties Protected. Coverage Restored.

ERS designation is creating measurable, documented outcomes for landowners and the broader landscape in Napa County. To date, Napa Firewise has supported 10 landowners in their insurance renewals with 100% success in better terms or coverage for the landowner. 18 additional renewals (HOAs, estates, commercial wineries) are in progress.

SAVINGS OUTCOMES

Across 10 Completed Renewals

50%

achieved 35-50% premium savings

hundreds of thousands of dollars

35%

achieved 25% savings

tens of thousands of dollars+

10%

achieved 10% savings

tens of thousands of dollars

All renewals resulted in improved policy terms (deductibles and coverage conditions)

CALIFORNIA FAIR PLAN

Restoring Market Access

- **3 renewals** resulted in the landowner exiting the California Fair Plan and returning to private market coverage
- **4 renewals** resulted in landowner obtaining increased coverage for their property

California Fair Plan is California's largest insurer of last resort—ERS exit represents full restoration of insurability.

LANDSCAPE SCALE

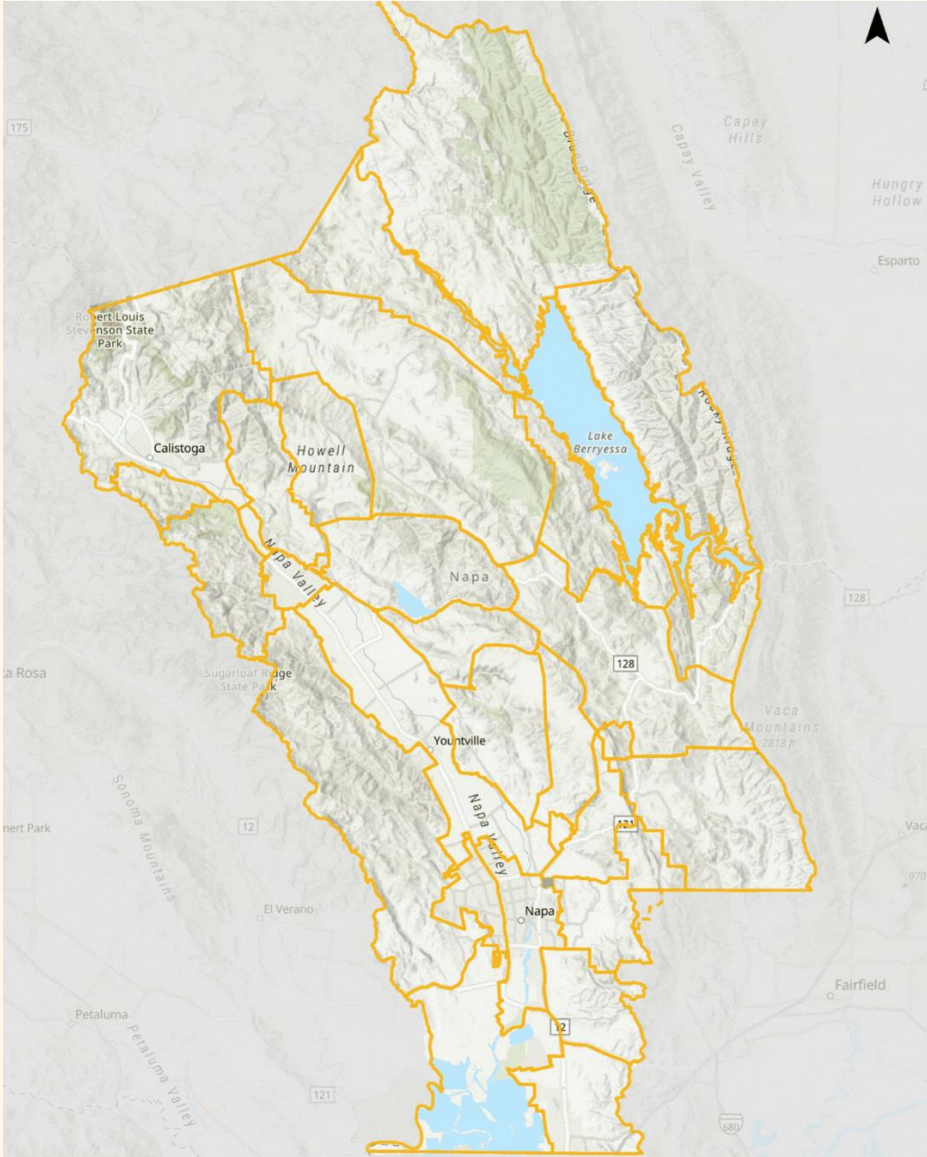
LNU County Wide Protection

Together, NCCF's leadership, interagency collaboration, project work, and Enhanced Resiliency Sites form a countywide system that protects everyone – not just individual properties.

- Mapped areas are topographically strategic to provide the highest countywide impact.
- Enhanced Resiliency Sites connect into a cohesive system across the county providing layering buffers to disrupt fire progress.
- NCCF grant funded project work in combination with The Valley Stewards Initiative and fee for service projects provide comprehensive resilience.

Even residents **without large landholdings** benefit from reduced fire intensity and more rapid containment.

This map when animated reflects the following, layered on top of one another: Fire Safe Council (FSC) boundaries, + Firewise recognized FSCs, + NCCF project database, + targeted ERS areas, + ERS sites in progress



SHARED OUTCOMES

Public Benefit

The Valley Stewards Initiative was designed through the lens of first responders, insurers, and landowners to deliver shared, public-facing outcomes. There is a reason these are not called Enhanced Wildfire Resilience Sites because they are multi-dimensionally resilient for watersheds, and critical habitat. Our work engages landowners to help them on a longer resilience journey.

SAFETY & RESPONSE

Firefighter Safety & Rapid Containment

- ERS and adjacent treatments influence fire behavior where responders engage
- Real-time visibility supports safer tactics during incidents
- Improved conditions for faster initial and extended attack

INSURANCE & RISK REDUCTION

Insurance Stability & Market Response

- ERS and adjacent sites are viewed favorably by insurers
- Insurers better understand contextualized risk and are more inclined to insure properties which can prove critical to containment
- While this won't solve the insurance crisis definitively it does start to bend the curve and allow landowners to get "credit" for their work.

COMMUNITY & PUBLIC HEALTH

Community & Health Outcomes

- Reduced fire intensity and smoke exposure
- Ecological preservation and restoration of our important natural resources and places
- Lower public health impacts during wildfire events
- Shared benefit across neighborhoods, not just individual landowners
- Reduced smoke impact to agricultural community

NAPA COMMUNITIES FIREWISE FOUNDATION

Thank
You.



LET'S CONNECT

- jnordlinger@napafirewise.org
- <https://napafirewise.org/valley-stewards>



Scan to follow on LinkedIn

NAPAFIREWISE



Building Climate Resilience through Tidal Wetlands & Floodplains

Aaron Fairbrook, Project Manager,
Napa County Resource Conservation District

Building Climate Resilience Through Tidal Wetlands & Floodplains

Huichica and Suscol Creek Projects

Aaron Fairbrook, Forest Health and Restoration Program Manager
Napa County Resource Conservation District



March 26, 2026
Napa Climate Now Summit

What is Napa RCD?

Since 1945, Napa RCD has been a leader in environmental stewardship across Napa County's forests, farms, and watersheds.

We partner with communities, youth, landowners, and agricultural producers to protect and restore natural resources, promote sustainable practices, and inspire future generations through hands-on learning and engagement.



Climate Resilience: Why This Matters?

Napa is facing increasing climate pressure

- Sea level rise pushing inland
- More intense storms increasing flood risk (*atmospheric rivers*)
- Loss of wetlands and floodplain function
- Infrastructure and communities at risk



The Opportunity



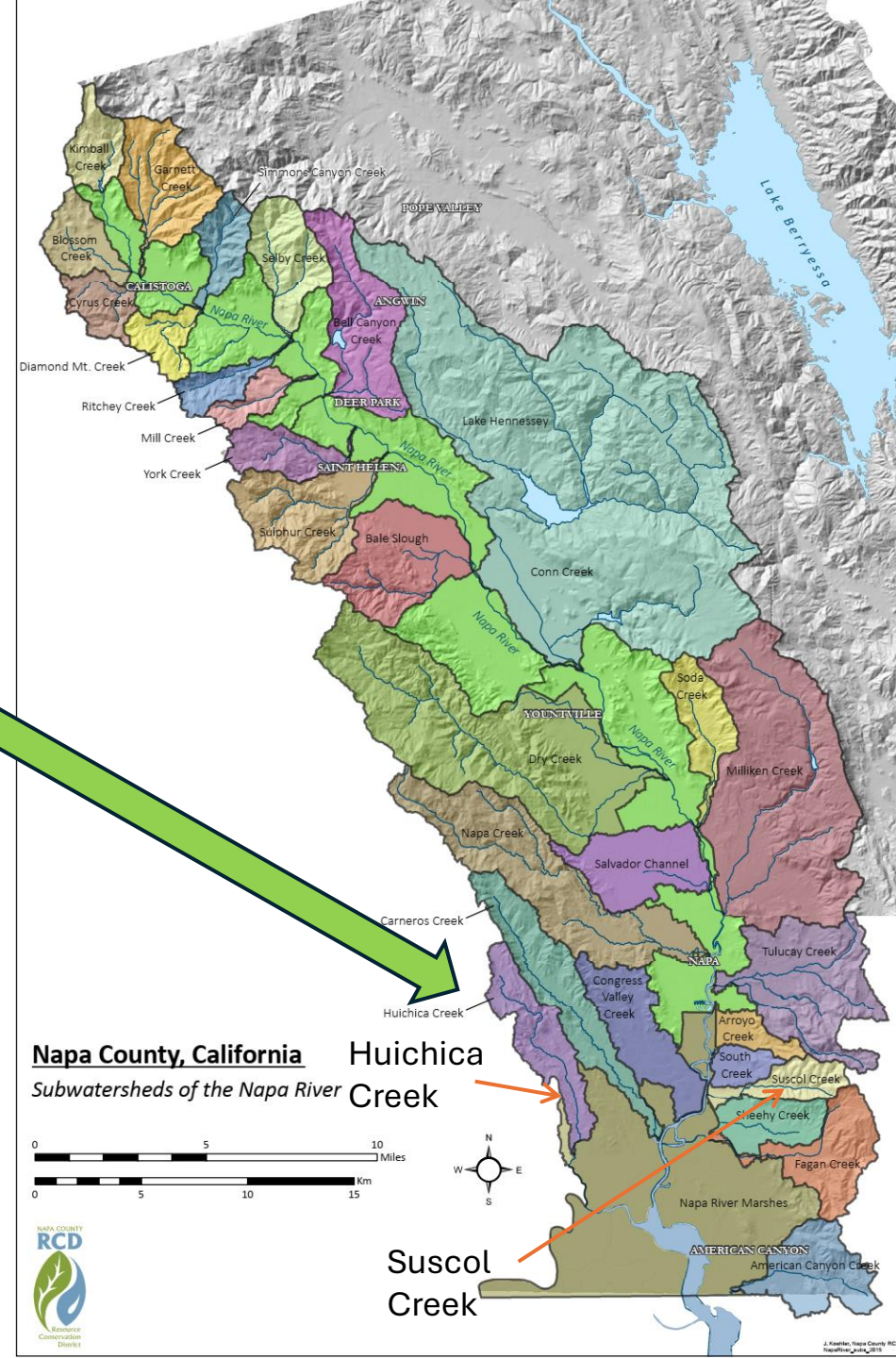
Floodplains and wetlands are natural infrastructure

- Store and slow water
- Reduce flood risk
- Adapt to sea level rise
- Reconnect rivers to their floodplains
- Support habitat and water quality

WHERE THIS WORK MATTERS

Lower Napa River - a climate transition zone

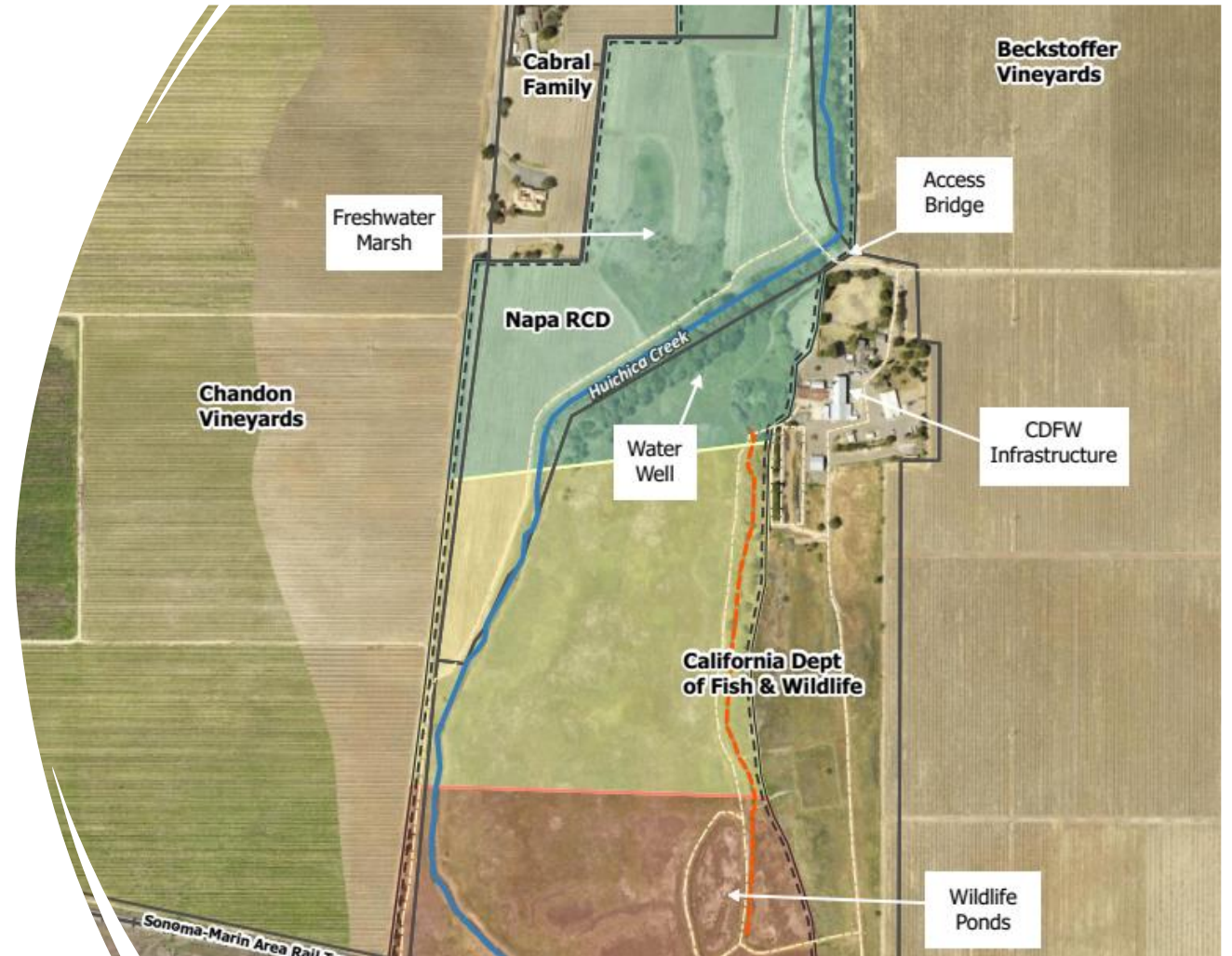
- Where sea level rise meets inland systems
- Where flooding risk concentrates
- Where wetlands can expand and adapt



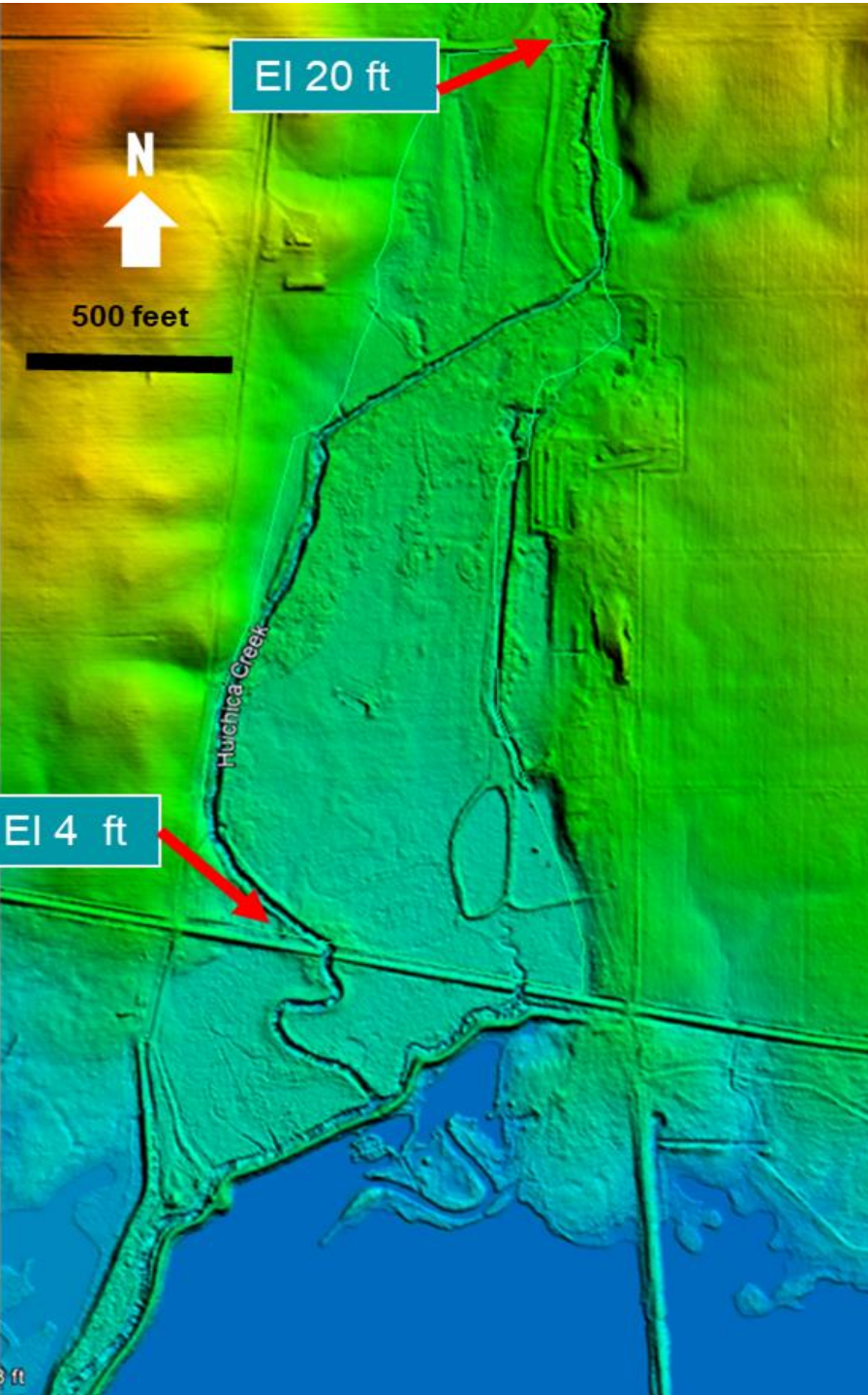
Huichica Creek

70-acre restoration effort

- Multiple landowners and partners
- Restoring tidal wetland, riparian, and floodplain habitat
- Reducing flood risk and supporting climate adaptation
- Designed with community input and engagement
- In partnership with HANA Resources & Balance Hydrologics
- Planning and design funded; advancing toward implementation
- Learn more and get involved: <https://naparcd.org/preserve>

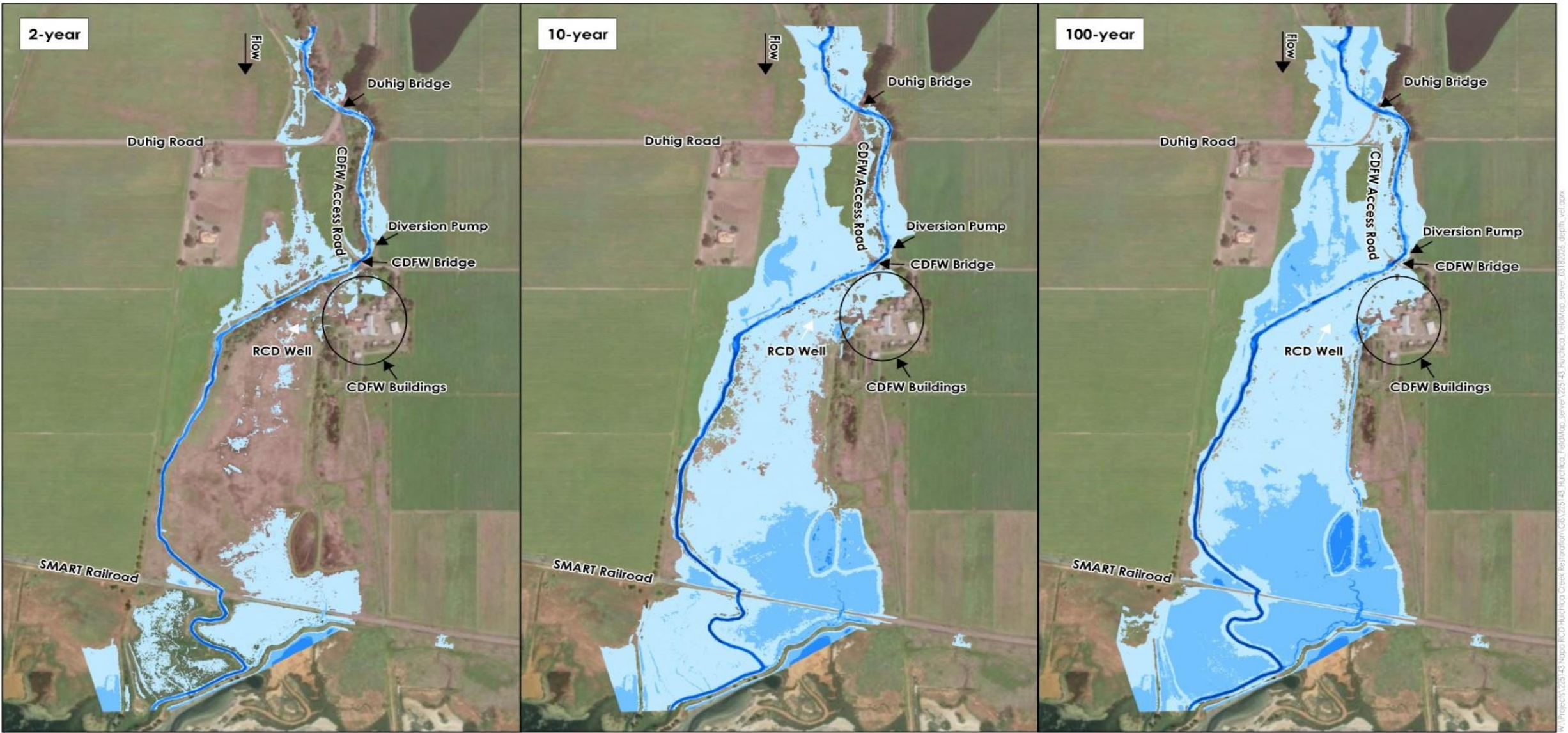


Sea Level Rise and Climate Resilience



SEA LEVEL RISE & ADAPTATION OPPORTUNITY



- Gentle slope allows wetlands to move inland
- Space for ~500+ feet of marsh migration
- Floodplain reconnection reduces storm impacts
- Rare opportunity for ecosystems to adapt and persist



DATA SOURCES: Vantour



Maximum Depth (ft)	Color
0 - 2	Lightest Blue
2 - 4	Light Blue
4 - 6	Medium Blue
6 - 8	Dark Blue
8 - 10	Very Dark Blue
10 +	Darkest Blue

DATE: MARCH 23, 2026

FIGURE 1

PN: 225143

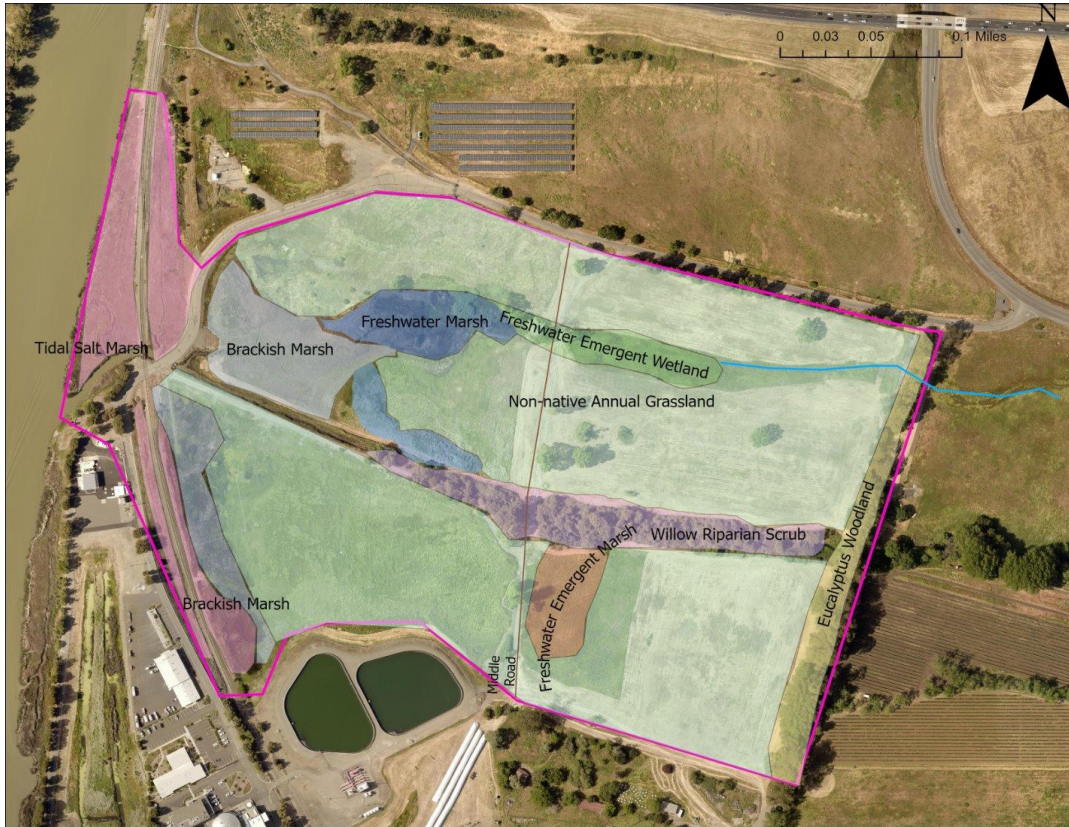
Maximum depth results (ft) for the 2-, 10-, and 100-year storm events.



Suscol Creek

The next step: scaling up

- Major floodplain and delta restoration opportunity (100+ acres)
- Designed for long-term sea level rise adaptation
- Integrates habitat, flood protection, and land use
- Informed by ongoing work at Huichica



A rare opportunity at the river's edge

- Located at the tidal transition zone
- Direct connection to Napa River system
- Opportunity to restore floodplain at meaningful scale



WHAT IT TAKES

- Partnerships across agencies, landowners, and stakeholders
- Community engagement to shape project design and educational opportunities
- Layered funding and long timelines
- Complex permitting and coordination

Community & Climate Benefits

These projects deliver multiple benefits:

- Reduce flood risk for nearby communities
- Expand public access (Vine Trail connection)
- Create opportunities for education and stewardship
- Honor cultural and historical connections to the land



An aerial photograph of a coastal wetland restoration project. A winding waterway, likely a restored canal or river, flows through a landscape of green and brown vegetation. To the left, a railway line runs parallel to the waterway. In the background, a large body of water, possibly a bay or estuary, is visible, with a long, narrow land strip extending into it. The sky is clear and blue.

Key Takeaway

Restoration is climate infrastructure

- Protects communities from flooding
- Adapts to rising seas
- Supports ecosystems and people

To be resilient to climate change,
we need to start treating landscapes as
infrastructure,
not just scenery.





Napa River Watershed Group Turns Community into Climate Action

**Lucas Patzek, Executive Director,
Napa Resource Conservation District**



Napa River Stewardship Network Turns Community into Climate Action

Lucas Patzek, Executive Director
Napa County Resource Conservation District
Napa Climate Summit - March 26, 2026



Photo: Andrew Lincoln

An Evolution of Stewardship

This work is built on the efforts of many people and organizations who have locally focused on watershed sustainability.





- **Establish a Watershed Group:** A diverse coalition of agricultural leaders, forestry and wildfire experts, tribes, environmental organizations, public agencies, and local residents will collaborate to address key water resource challenges.
- **Identify Gaps and Opportunities:** Through extensive community input, the project will assess existing studies, restoration projects, and water resource programs to guide future action.
- **Expand Education and Outreach:** New demonstration projects, workshops, field days, and digital resources will promote sustainable water and land management practices tailored to Napa County.
- **Lay the Foundation for a Long-Term Watershed Plan:** These efforts will inform the development of a Napa River Watershed Restoration and Management Plan, outlining goals, prioritization strategies, and funding opportunities for future projects.

Developing a South Bay Watershed Group: Information and Resources



A Regional Movement: Watershed Stewardship

- Russian River Confluence
- Alameda Creek Watershed Forum
- South Bay Watershed Group
- Peninsula Watershed Forum

Alameda Creek Watershed Forum





Pilot Focus: Conn Creek & Lake Hennessey

Why Start Here?

- Vital municipal water supply.
- Diverse land uses: Vineyards, parks, rural residential, and Tribal connections.
- High community readiness, active Fire Safe Council, emerging AVA.

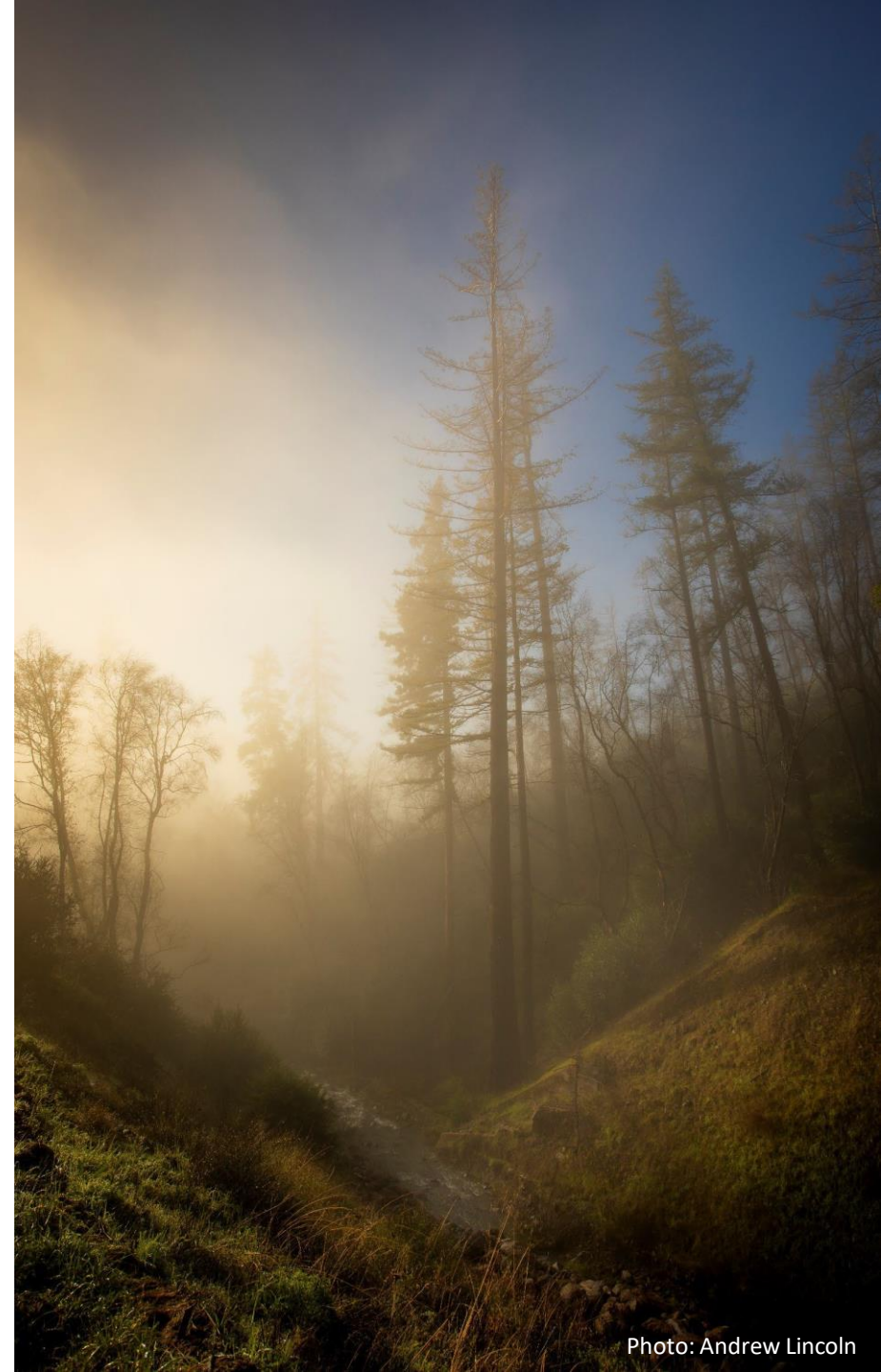
The Scalable Goal

Creating a "neighborhood template" for community-led restoration that can be replicated across different sub-watersheds in Napa County.



Desired Outcomes: Multi-Benefit Climate Action

- **Rehydrating the Landscape:** Enhancing groundwater recharge and soil moisture to buffer farms and fish against frequent droughts.
- **Wildfire Resilience:** Integrating community-led forestry and fuel reduction to protect neighborhoods and critical infrastructure.
- **Economic & Agricultural Vitality:** Supporting the wine industry and local food systems through regenerative practices that improve land health.
- **Restoring Biodiversity:** Targeted fish passage remediation and habitat restoration to support species recovery and enhanced streamflow.
- **The Knowledge Bridge:** Creating a scalable model where neighborhood-level data informs County-wide policy and WRC strategic planning.
- **Social Capital:** Building a resilient network of informed neighbors ready to act together during climate-driven emergencies.



Get involved in the Napa River Stewardship Network

Visit: naparcd.org/get-involved/stewardship-network/

Contact: Ruby Stahel, Ruby@NapaRCD.org, (707) 690-3128

Thank you!

Lucas Patzek, Executive Director

Lucas@NapaRCD.org, (707) 690-3119



A landscape photograph with a teal color cast. In the foreground, there are several tall, thin stems with clusters of small yellow flowers. In the background, a large, dark tree stands on a grassy field. The sky is a solid teal color.

Community Resiliency

Beth Painter, Moderator



PG&E's Approach to Resiliency and Wildfire Mitigation in Napa County

Dave Canny, PG&E Regional Vice President

PG&E's Approach to Resiliency and Wildfire Mitigation in Napa



Dave Canny
PG&E Vice President
North Coast Region

March 26, 2026
Napa Climate Summit

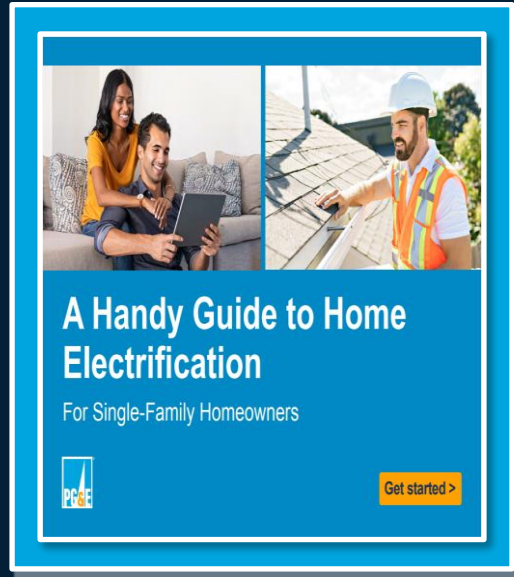
COMMITTED TO CLIMATE ACTION IN CALIFORNIA

PG&E will deliver clean energy while meeting customer and stakeholder needs amid increasing climate-driven weather events and environmental challenges

Net-Zero Energy System

Objective:

Achieve a net-zero energy system in 2040 by reducing our carbon footprint and enabling our customers to reduce theirs

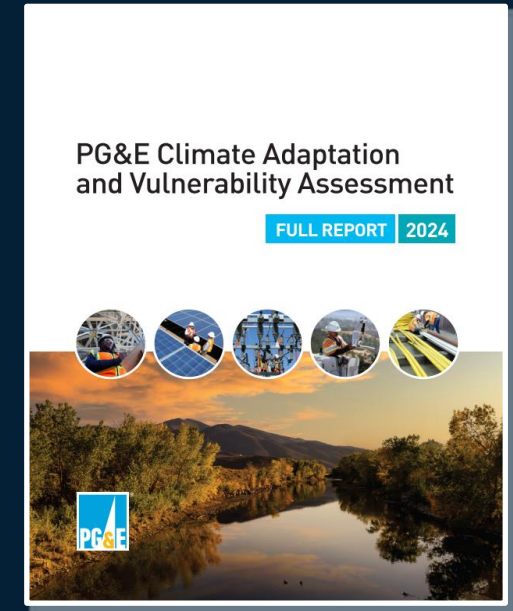


 Learn more at pge.com/electrification

Climate-Resilient Energy System

Objective:

Maintain a safe, affordable, and reliable energy system in the face of more climate-driven natural hazards



 Learn more at pge.com/climate resilience

SERVING OUR NORTH COAST REGION

Hyperlocal focus for improved customer experience



741,800 Electric Customers Served



525,300 Gas Customers Served



31 Federally Recognized Tribes Served



18 Non-Federally Recognized Tribal Groups Served



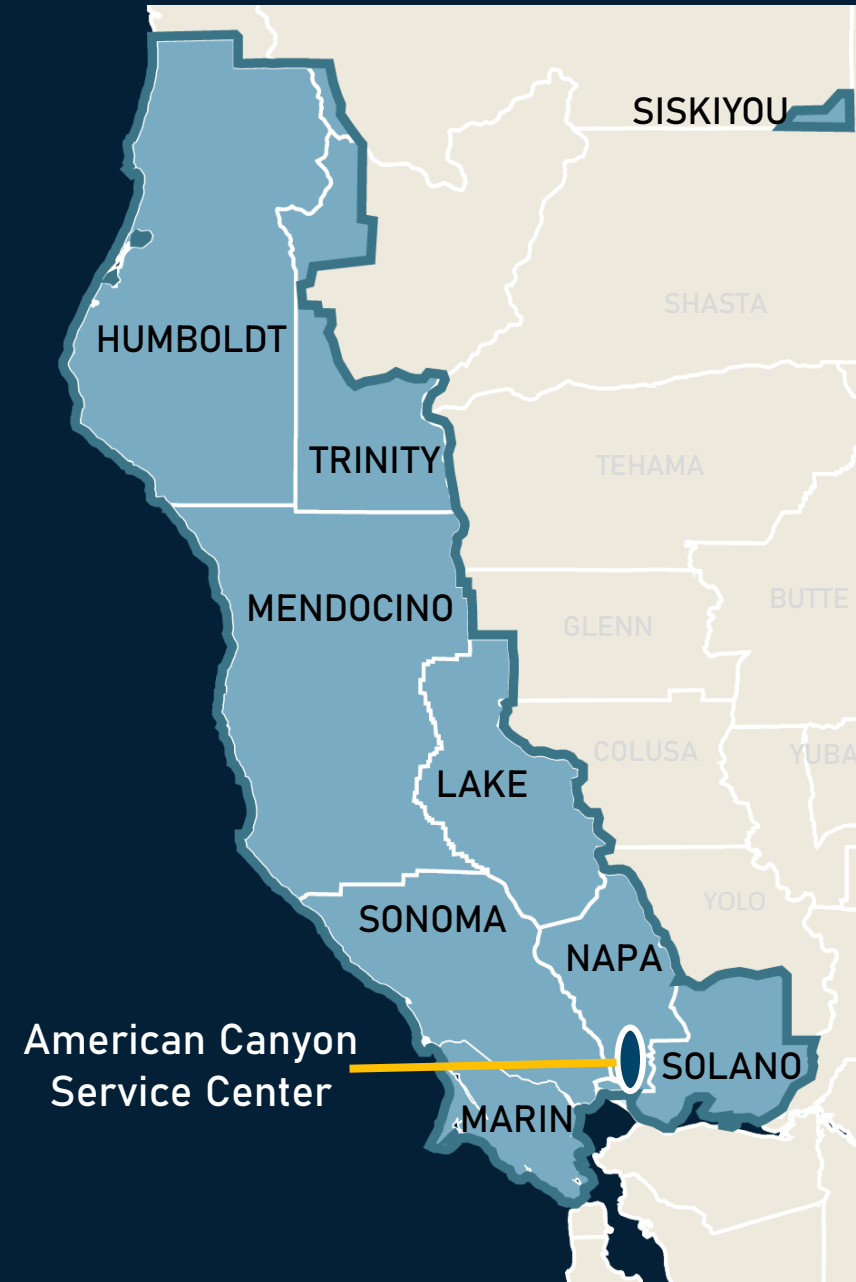
2,517 Employees Serving You

Counties Served

Humboldt	Marin
Lake	Sonoma
Mendocino	Napa
Siskiyou	Solano
Trinity	

Serving Napa County

119,000	Electric Customers
94,000	Gas Customers



REDUCING WILDFIRE RISK WITH LAYERS OF PROTECTION



Situational Awareness

- A New Tools and Technology:** Installing over 2,000 weather stations and high-definition cameras to better predict and respond to wildfires and severe weather.



Operational Mitigations

- B Safety and Infrastructure Protection Teams:** Deploying trained response professionals to increase safety and enhance community recovery.
- C Enhanced Powerline Safety Settings:** Detecting hazards on powerlines and shut off power quickly to prevent ignition.
- D Public Safety Power Shutoff:** Turning off power for safety as a last resort during severe weather.



Resiliency Work

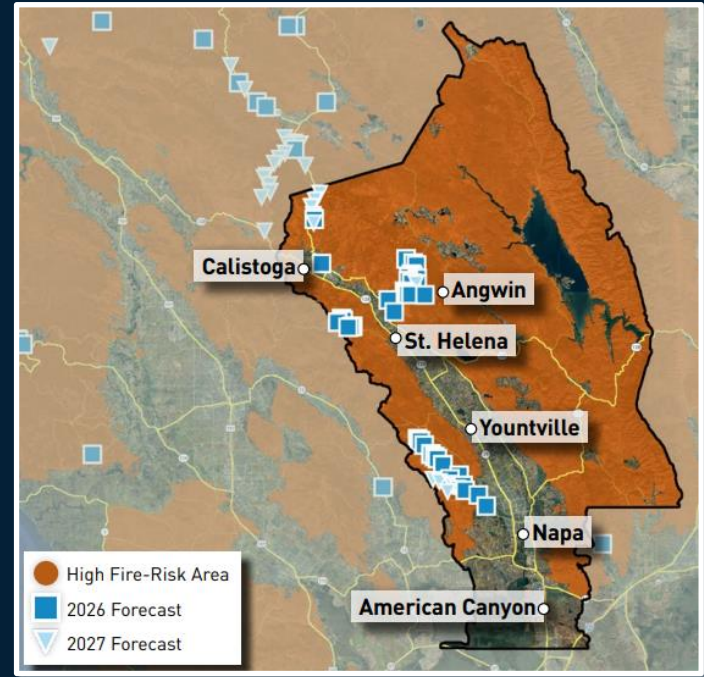
- E New, Strengthened Equipment:** Installing strengthened poles and covered powerlines on thousands of miles of overhead powerlines.
- F Undergrounding Powerlines:** Completing thousands of miles of undergrounding in the highest wildfire risk areas.
- G Vegetation Management:** Trimming or removing 1.5 million+ trees to keep them away from powerlines and prevent wildfires.



INVESTING IN WILDFIRE MITIGATION ACROSS NAPA

We are strengthening our electric system by upgrading powerlines. This includes moving powerlines underground and completing wildfire safety system upgrades.

	Completed through 2025	Forecast in 2026	Forecast in 2027
Undergrounding	43 miles	72 miles	20 miles
Strengthened Poles & Covered Lines	93 miles	21 miles	5 miles
Line Removal	2 miles	1 miles	<1 mile



PG&E SIPT crews supporting Pickett Fire response in Napa.

PG&E "Bluehawk" at Park Fire.



See work in your area by visiting pge.com/wildfiresafety-upgrades

STRENGTHENING FIRE SCIENCE

PG&E supports local wildfire resiliency through charitable giving and innovative partnerships




Last October, PG&E Wildfire Resiliency Chief Sashi Sabaratnam led our engagement with the CAL FIRE LNU Wildfire Resilience Corridors Planning Session in St. Helena.

SPONSORING INNOVATION

PG&E supports a global competition to radically reinvent how we detect and suppress destructive wildfires



**XPRIZE
WILDFIRE**



**GORDON AND BETTY
MOORE
FOUNDATION**

30 LAUNCHED PRIZES	35,000+ COMPETITORS	173 TEAM COUNTRIES
360+ PARTNERS	\$519M+ CUMULATIVE PRIZE PURSE LAUNCHED	9175 PATENT FILINGS BY XPRIZE TEAMS



First-ever autonomous wildfire suppression demonstration



CONRAD N. HILTON
FOUNDATION

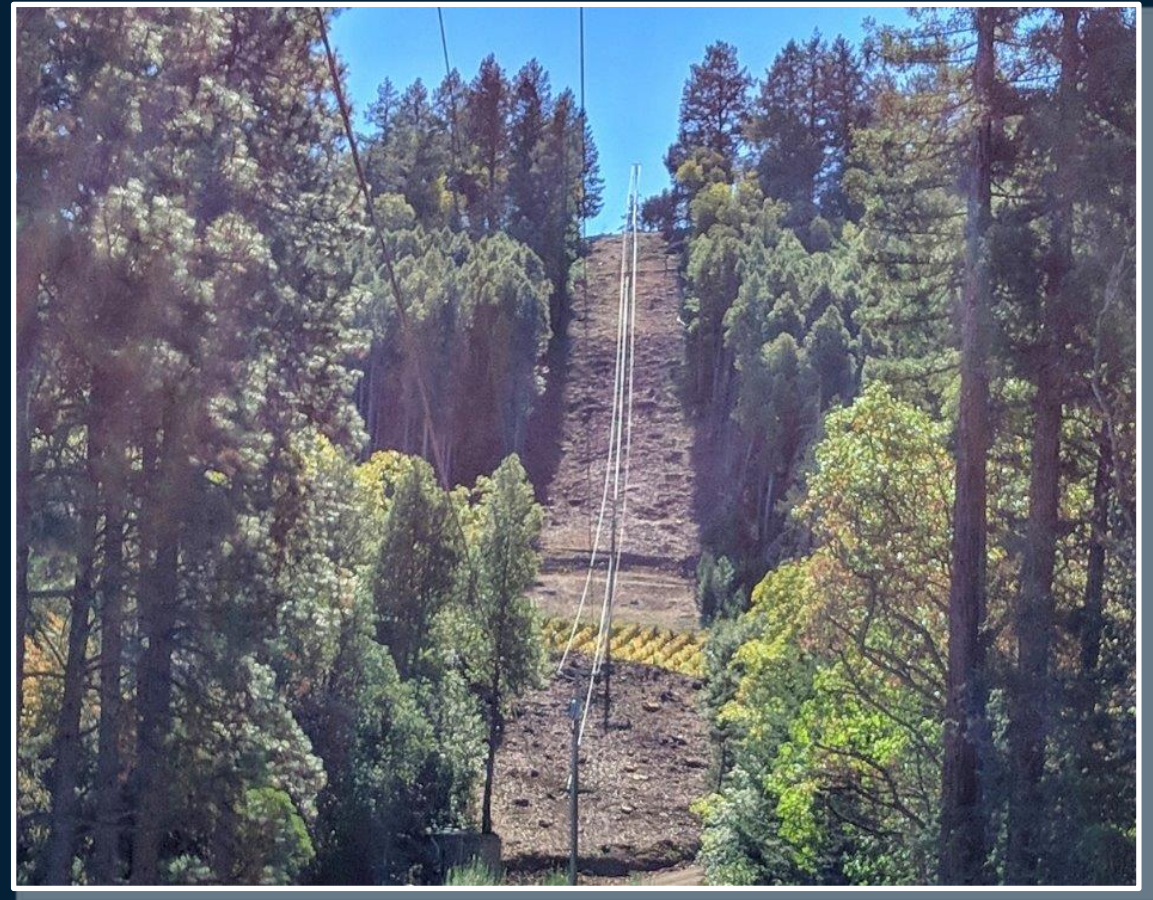


THANK YOU

Dave Canny

Vice President, North Coast Region | PG&E

Dave.Canny@pge.com





Calistoga Resiliency Center

**Peter Wittenberg, Director, Intel & Implementation
Energy Vault**

CALISTOGA RESILIENCY CENTER

ENABLING A SUSTAINABLY ENERGIZED COMMUNITY



INTRODUCING ENERGY VAULT



Fully Integrated IPP

(Development, EPC/Integration, Asset Management and Monetization)

**WE ARE A BUILD, OWN,
AND OPERATE
INFRASTRUCTURE
PLATFORM**

**WE POWER THE AI ERA
THROUGH VERTICAL
INTEGRATION**

Build, Own, & Operate →

Recurring Revenue, Larger Margins

Self Integration and Grid Expertise →

Lower CapEx and OpEx, Larger IRR's



Capital Raise Arm & Project Finance Pool

Technical Expertise → Lower Project Risk

Execution Speed → Earliest Online Dates



A Case Study: Powering Calistoga During PSPS Events

Calistoga's former diesel solution



Image of temporary diesel units.



Video + audio of diesel generators in operation, producing significant exhaust and noise.

Incumbent Solution: Diesel gensets

- High nuisance (noise, vibration, pollution)
- Limited performance, hibernates
- Impractical for grid operation...resiliency only
- Expensive
- Limited duration (10-12 hour tank capacity)

A Clean, High-Value Approach to Resiliency



Zero-emission hydrogen + battery H-Vault system.

New Solution: CRC battery/LH₂-fuel cell hybrid

- Clean, low nuisance
- Fast response, flexible, non-hibernating
- High-efficiency Li-ion for grid support & market operations
- Resiliency benefits at 5-10% lower cost
- Two-day duration, extensible with refueling



The H-VAULT™ Solution: Calistoga Resiliency Center

Snapshot

.....

First-of-its-kind hybrid hydrogen + battery energy storage system enables a cost-effective, community-scale, zero point-source emission microgrid that stores and dispatches clean energy on demand.

- **Customer:** PG&E
- **Peak Power Output:** 8.5 MW
- **Microgrid Duration:** 2 days
- **System Components:**
 - **Energy Vault:** B-VAULT™, VaultOS™, H2DS, LTSA,
 - **Partner:** Plug Power Fuel Cells
- **Project Status:** Operational



CRC as of April, 2025



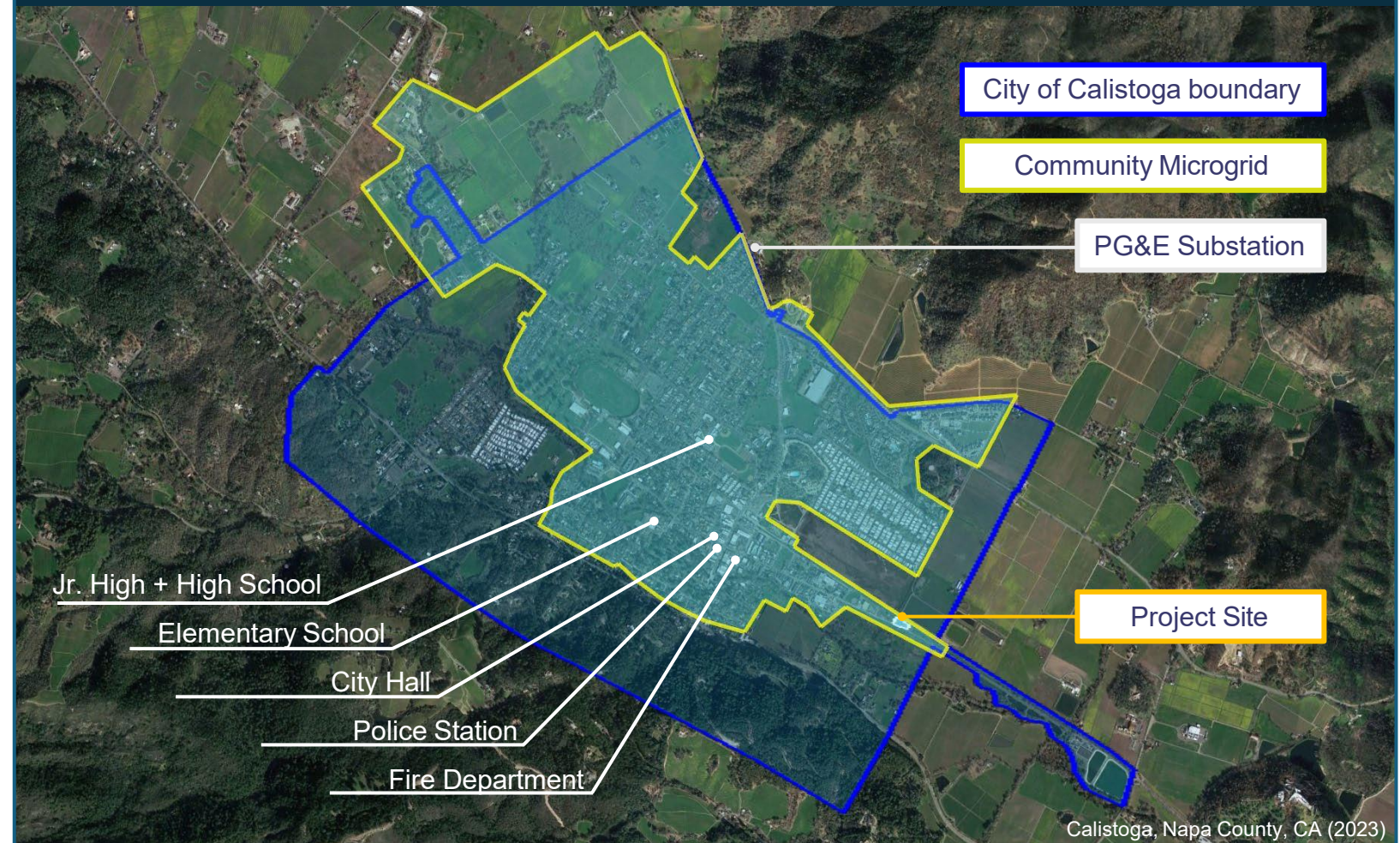
Project Impact: A Community Served

Our Partner Approach

Working with you Every Step of the Way:

1. Understanding local community need
 1. Historical context and barriers
 2. Identification of project goals
2. Designing a tailored system solution,
 1. End-to-end Engineering
 2. Permitting
3. Delivering the full turnkey project,
 1. Construction
 2. Project Management
 3. Lifetime O&M

The CRC Microgrid and Critical Community Infrastructure





ENERGY VAULT®

Enabling a Renewable World





Anaerobic Digestion to Renewable Natural Gas System at City of Napa's Materials Diversion Facility

Kevin Miller, Materials Diversion Administrator
City of Napa



Anaerobic Digestion (AD) to Renewable Natural Gas (RNG) System at City of Napa's Materials Diversion Facility

Napa Climate Summit: March 26, 2026

Presented by Kevin Miller, City of Napa Materials Diversion Administrator

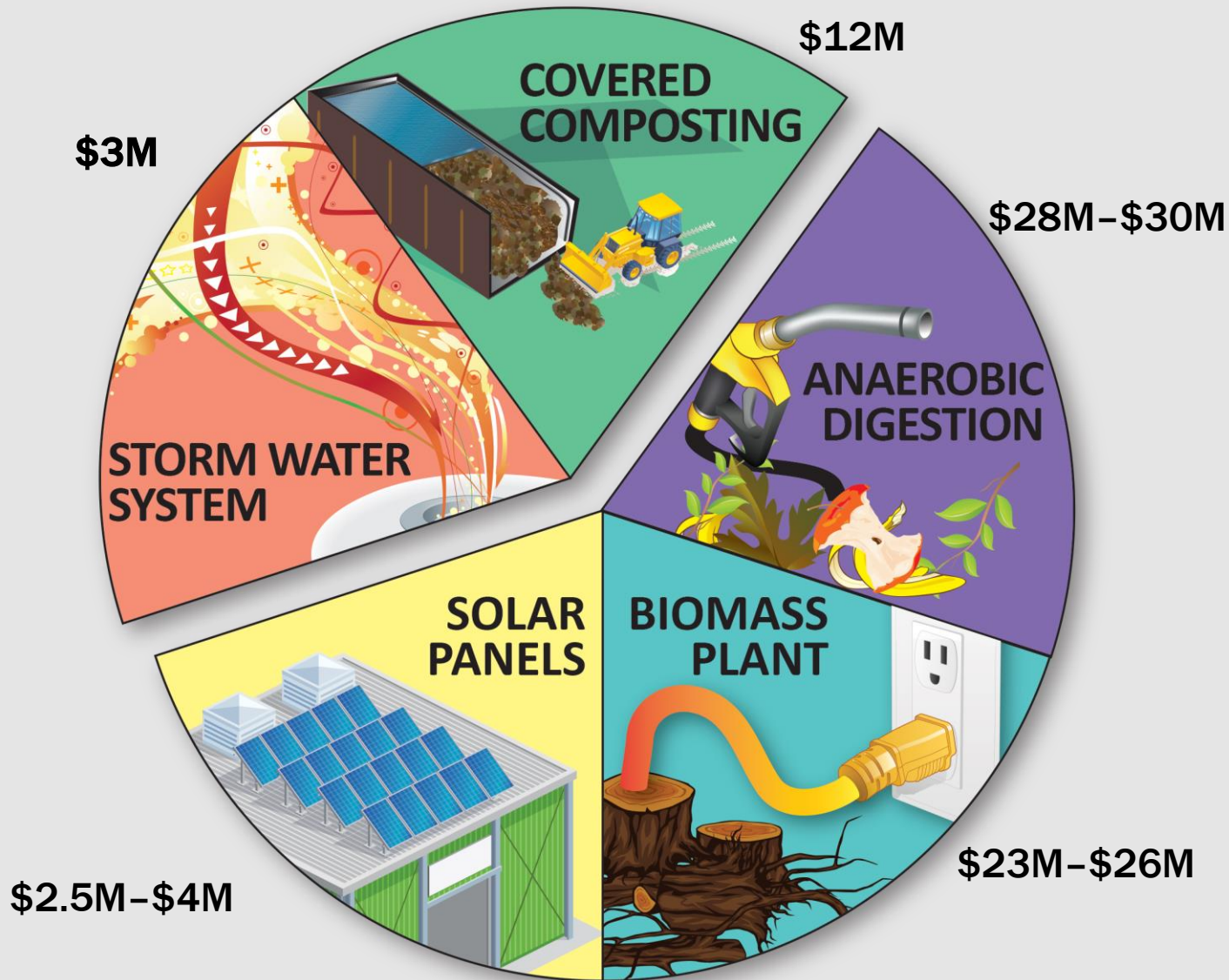
email: kmiller@cityofnapa.org; p. (707) 257-9291



BACKGROUND FOR AD TO RNG SYSTEM

- Materials Diversion Facility (MDF) master planning & feasibility study (2010-11)
- Napa Renewable Resources Project (NRRP) Initial Study/Mitigated Negative Declaration – 2012-2013
- 2018 & 2022 Contract Amendments with Napa Recycling & Waste Services (NRWS) explicitly contemplated the construction and operation of an anaerobic digestion (AD) facility at the City's MDF





Regulatory Requirements

- ✓ Stormwater System Improvements
- ✓ Covered Composting System

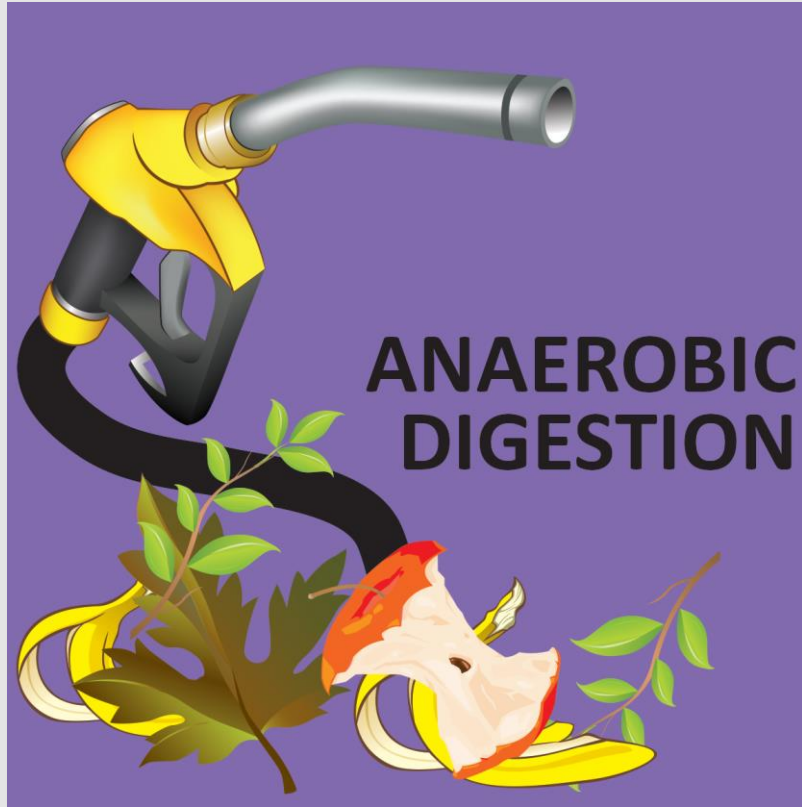
Business Opportunities in Sustainable Renewable Energy

- ❖ Anaerobic Digestion
- ❖ Biomass Plant
- ❖ Solar Panels

Overview of Napa Renewable Resources Project (NRRP) Elements



Anaerobic Digestion (AD) Overview



- This “air-less” technology ferments a mix of wet & dry plant/food matter to create and capture biomethane or “biogas”
- The organic by-product (digestate) goes through MDF’s CASP covered compost system to become a finished compost product

CALRECYCLE GRANT

- April 2023 - City applied for a competitive grant from the state
- Dec 2023 - City was awarded a \$10M grant for an AD to Renewable Natural Gas (RNG) system
- May 2024 - City accepted grant and signed agreement with CalRecycle
- December 2025 - the City's grant agreement with CalRecycle was amended and extended through April 2028

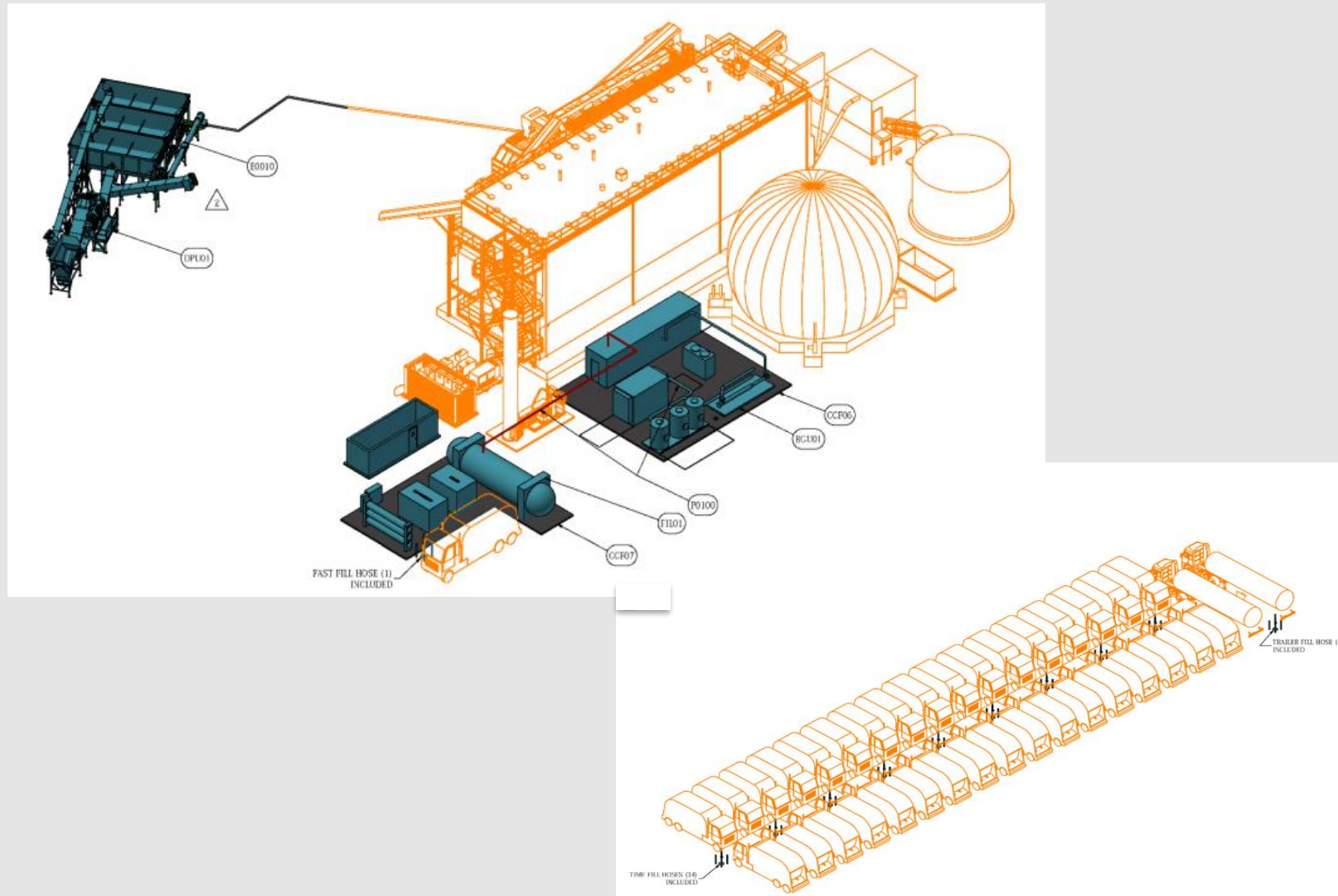


CALRECYCLE GRANT

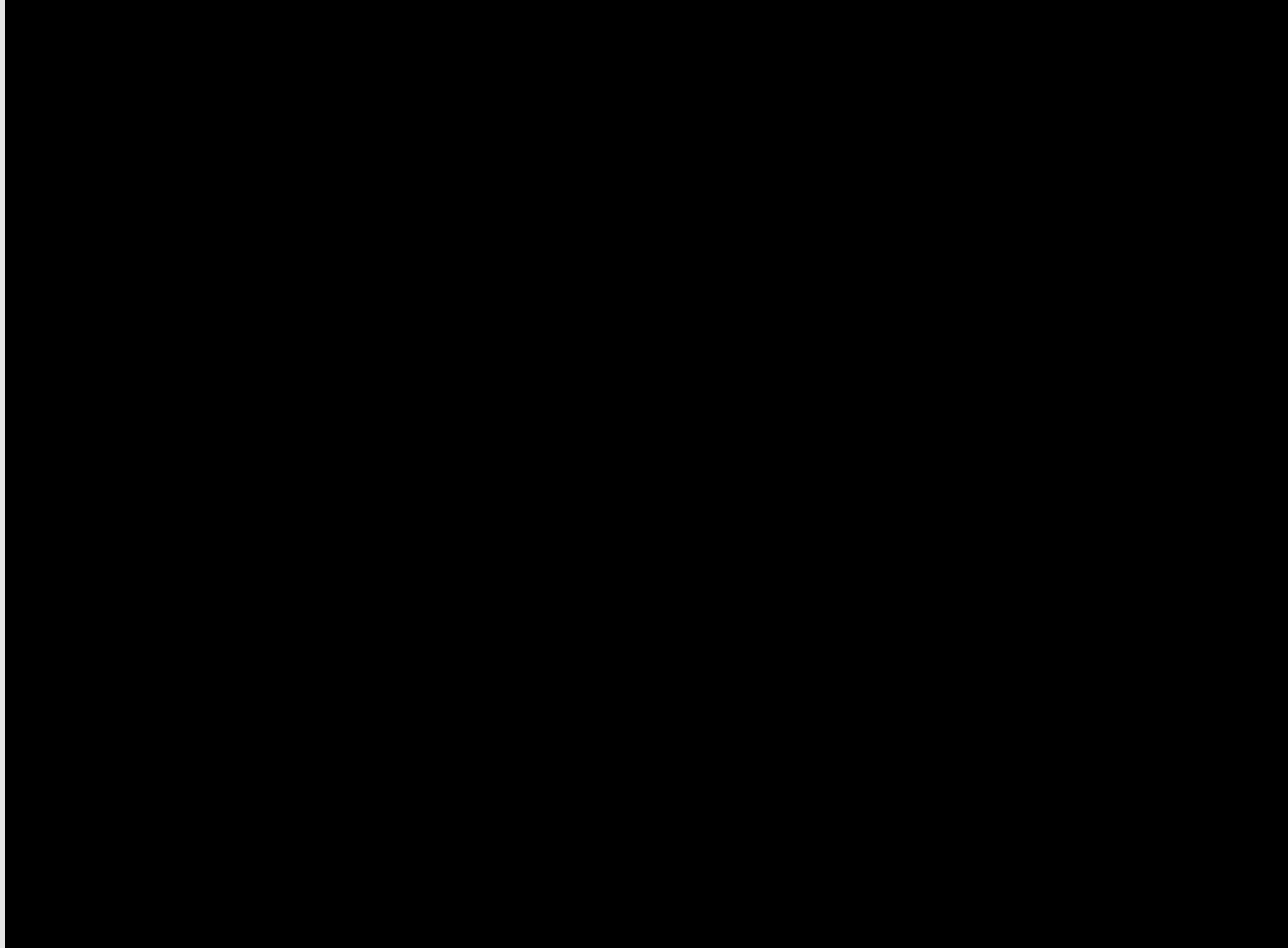
- \$10M funding towards:
 - \$8.1M Slow & Fast Fill RNG Fueling Infrastructure
 - \$1.9M Organics **Pre-Processing** Equipment:
 - * State-of-the-Art Organics “De-packager”
 - * Finishing Trommel Screen
 - * Two Glass Crushers
 - * 6,000 Gallon Storage Tank



Napa AD to RNG System (Layout)



AD to RNG System Video



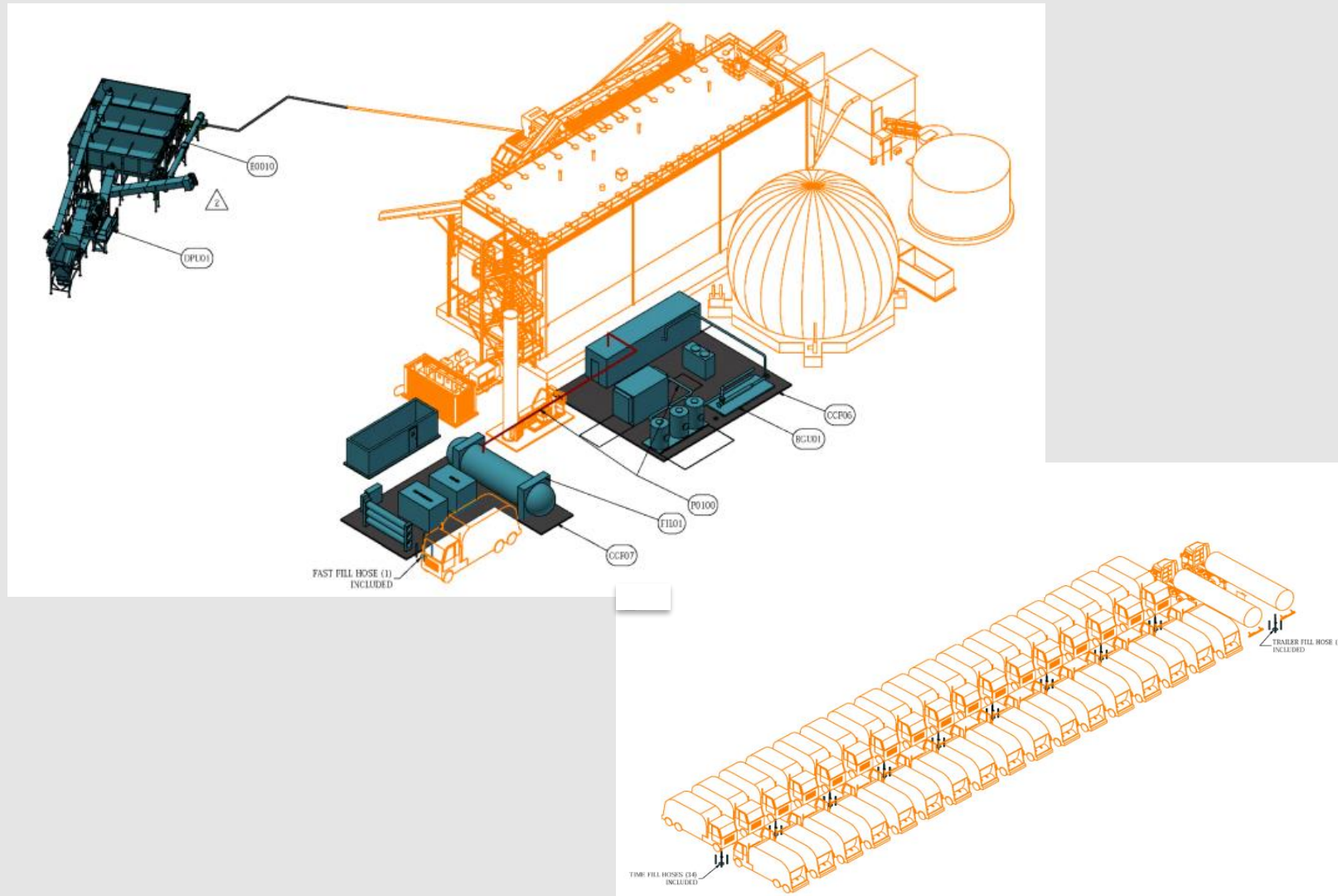
AD to RNG System (Cont.)



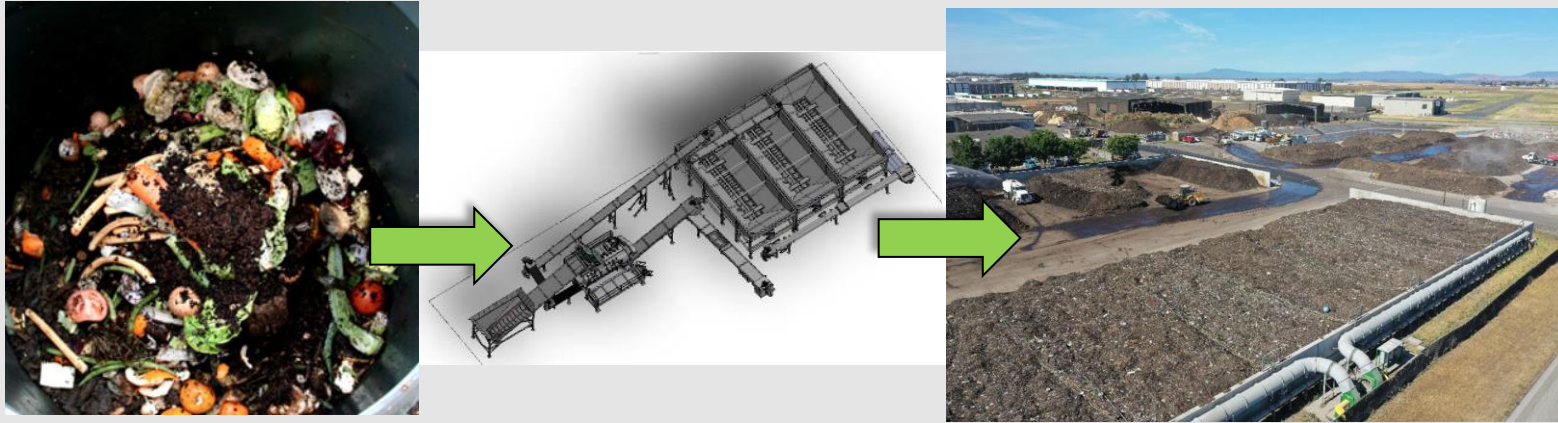
Special designed agitator prevents sedimentation

- \$10M (grant-funded) owned by City
- \$18-20M (privately financed) owned by Bulk Handling Systems (dba Zero Waste Energy)

Napa AD to RNG System (Cont.)



NAPA AD TO RNG HIGHLIGHTS:



AD to RNG System at City MDF:

- NRWS to Construct, Install, Maintain and Operate AD to RNG system for 20 years (with 5-year extension option)
- City to pay fixed \$5.75/gallon (diesel gallon equivalent) for first 3 years for NRWS fleet and then 90% of local CNG retail cost starting year 4

NAPA AD TO RNG HIGHLIGHTS:



AD to RNG System at City MDF (Cont.):

- Maximum 20,000 tons per year (TPY) of AD Digestate to be accepted in MDF's Covered Aerated Static Pile (CASP) system
- 6,000 TPY in added CASP capacity = \$270K/year in avoided cost savings for City

Non-financial benefits of AD to RNG

- **Clean Air** = 100% clean air “carbon-negative” vehicle fuel (certified by CARB at -165.05 gCO₂/MJ) for refuse & recycling fleet not vulnerable to market price fluctuations.
- **Sustainable** = “Fork to fuel” is closed loop sustainable infrastructure (with collected organics serve as the feedstock to provide fuel for vehicles).
- **Best Available Technology** = Deployment of the best available technology for air emission control, odor reduction, and stormwater management (City avoids need to “reinvest” in 10-15 years due to more stringent regulations).



Non-financial benefits of AD to RNG (Cont.)

- **Climate Action/GHG Reduction** = Significant fulfillment of both City facility and community-wide sustainability goals.
- **Local Renewable** = Provides a locally available and renewable source of biofuel not dependent on “fracking” extraction for the natural gas.
 - Future conversion to produce electricity if refuse & recycling fleet transitions to an electric fleet.
- **Community Scale** = Use of a commercially proven, community scale technology to serve as a model for other communities.



...and the Bonus!

At full capacity, over 10 years the Napa AD to RNG system would prevent...

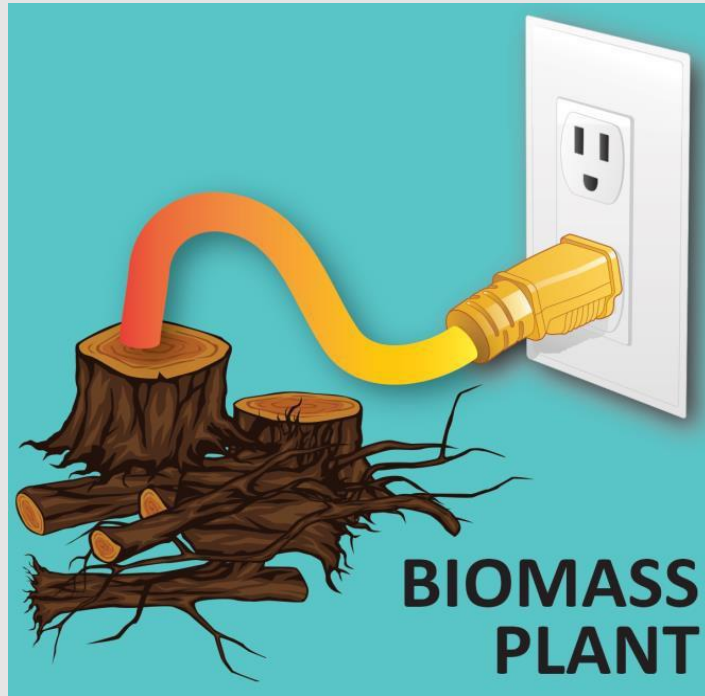
100,806 metric tons of CO₂ from being released.



Equivalent:

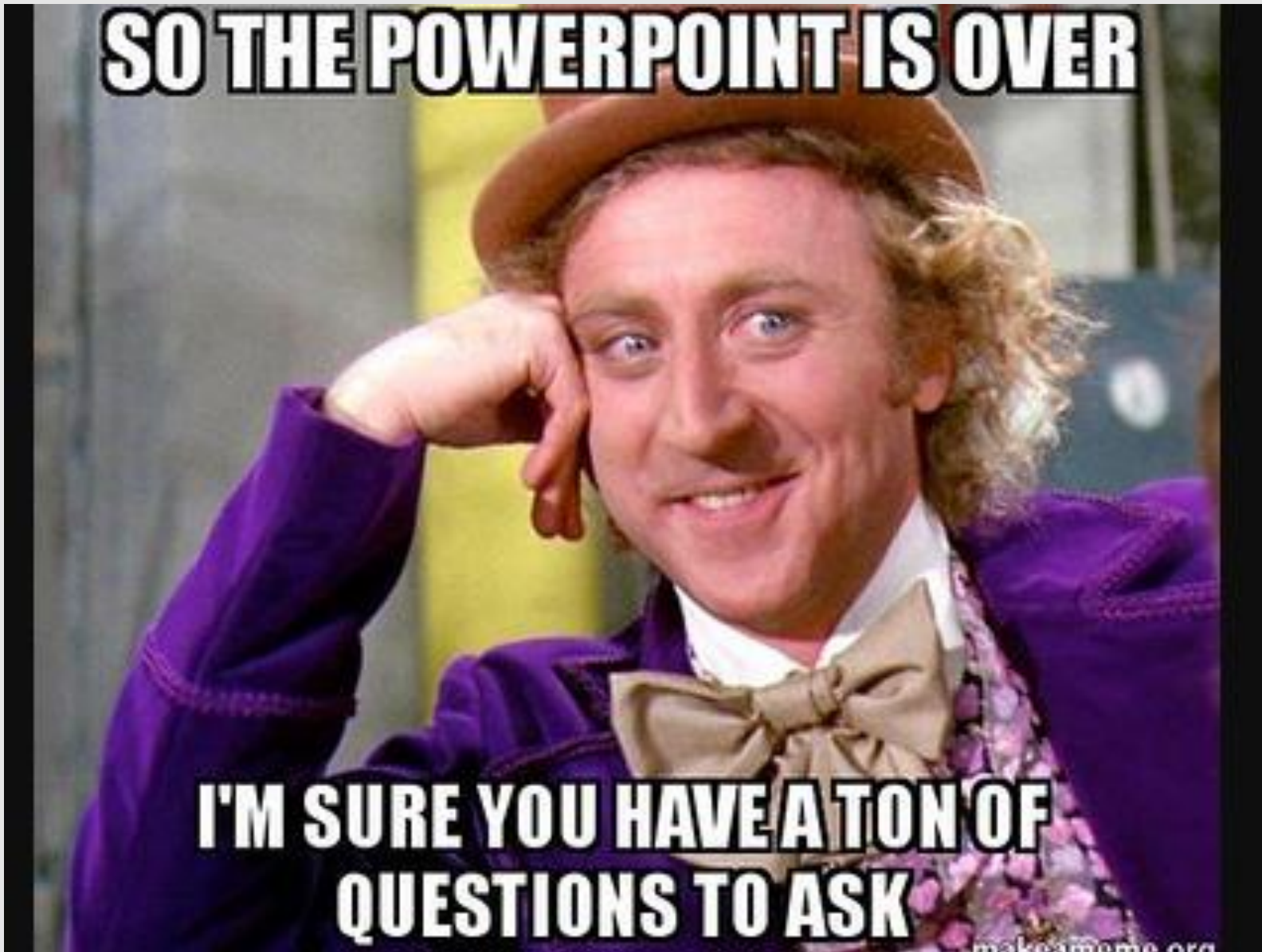
Removes 21,222 passenger vehicles
off the road (per EPA & CARB metrics).

Future Renewable Energy Project at Napa MDF? **Biomass Conversion Technology**



- Biomass Conversion Plant converts wood waste & high carbon yard trimmings into a “Syngas” for power generation
- Wood-chips reduced by 85%-95% into a solid byproduct called “Bio Char” that can be sold as a valuable soil amendment or water filtering medium

SO THE POWERPOINT IS OVER



**I'M SURE YOU HAVE A TON OF
QUESTIONS TO ASK**

makememe.org





Maximizing Climate Return on Investment

Linda Brown, Co-founder

SCS Global Services, Napa Climate NOW! and Global Heat Reduction

New Tool to Make Napa More Climate Resilient

- ✓ **Napa Case Study: NRWS
Composting Operations**



**GLOBAL
HEAT
REDUCTION**

Total Climate Accounting™

PUBLIC DRAFT

NAPA COUNTY

Regional Climate Action and Adaptation Plan

AUGUST 2025



- **46 Measures**

to reduce GHG emissions compared to 2019 across 6 sectors

- **17 Measures**

GHG emission reductions projected for 2030, 2035, and 2045

Implementation Question:

How can we leverage this information to get the greatest climate benefit for each taxpayer dollar spent?

It's time to focus on Speed and Scale

SPEED

What actions will most rapidly reduce the excess trapped heat that is driving climate change?

Within timeframes that matter!

SCALE

What actions will deliver the greatest level of heat reduction? And can these solutions scale up?

Climate ROI

Deliver the greatest heat reduction per dollar within crucial timeframes.



Output

Emissions Reduction

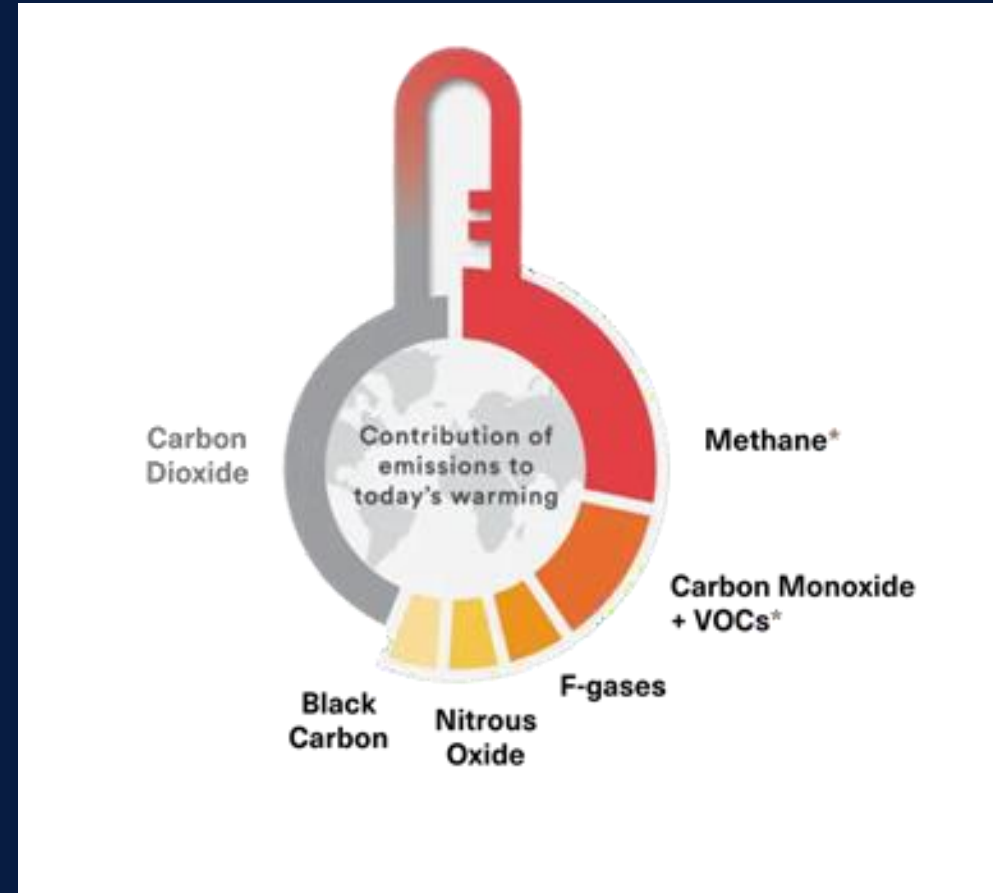


Outcome

Global Heat Reduction

This Requires a 2-Part Strategy . . .

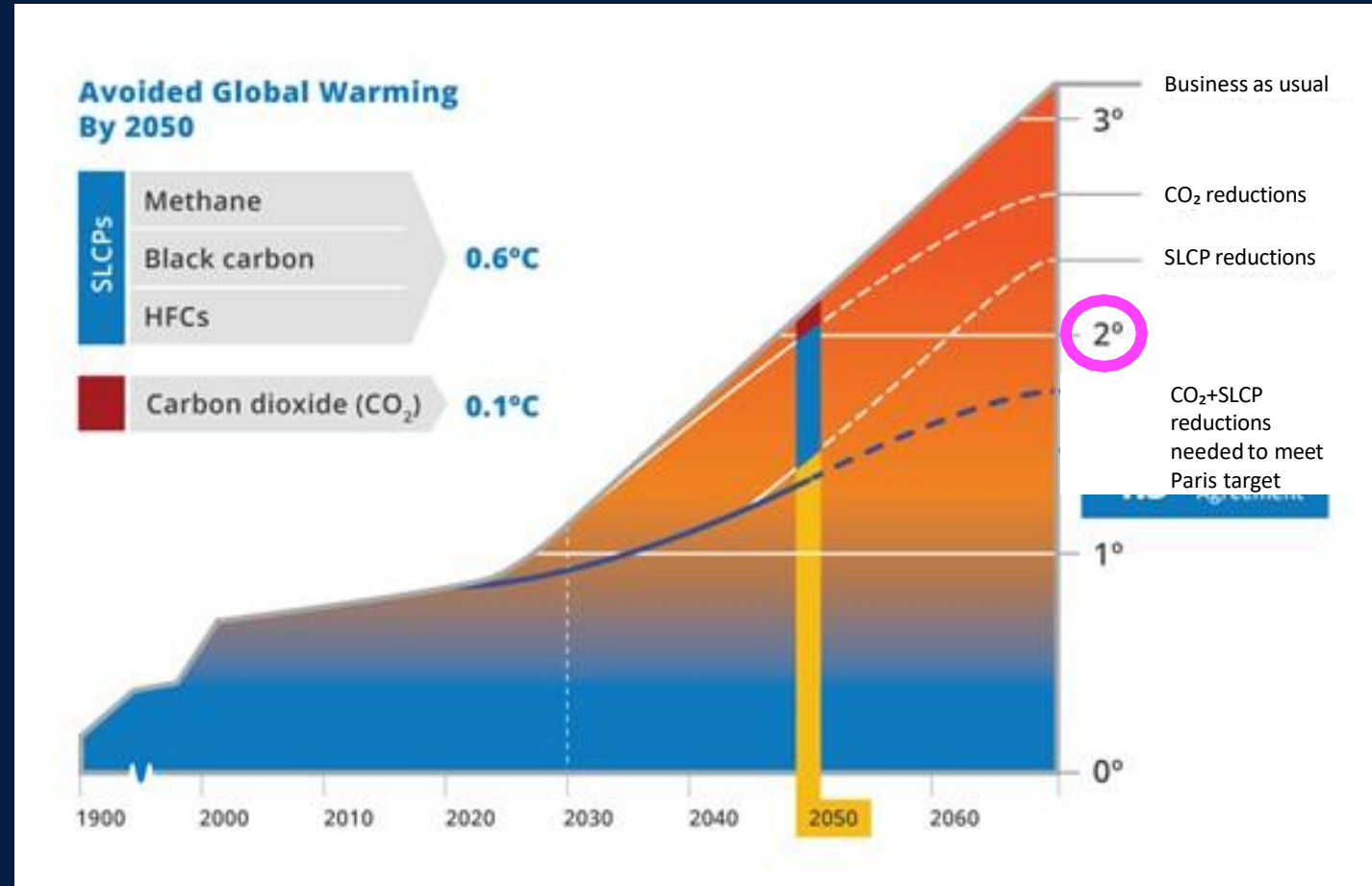
- Rapid reductions in short-lived climate pollutants (“super pollutants”) to slow down global warming now



Source: CCAC

This Requires a 2-Part Strategy . . .

- Rapid reductions in short-lived climate pollutants (“super pollutants”) to slow down global warming now
- Further reductions of CO₂ and other GHGs for long-term climate stability



Source: CCAC

Reducing CO₂ + SLCPs is the only way to limit to stay below +2°C

Total Climate Accounting

Based on the latest IPCC vetted climate science,

- ✓ All GHGs in conventional carbon footprints
- ✓ Additional short-lived climate “super pollutants”
- ✓ The degree to which each climate pollutant heats or cools the planet (“radiative forcing”) over all timeframes of interest (2030, 2050, 100 yrs. etc.)

CH₄ potency vs CO₂

28x (over 100 years)

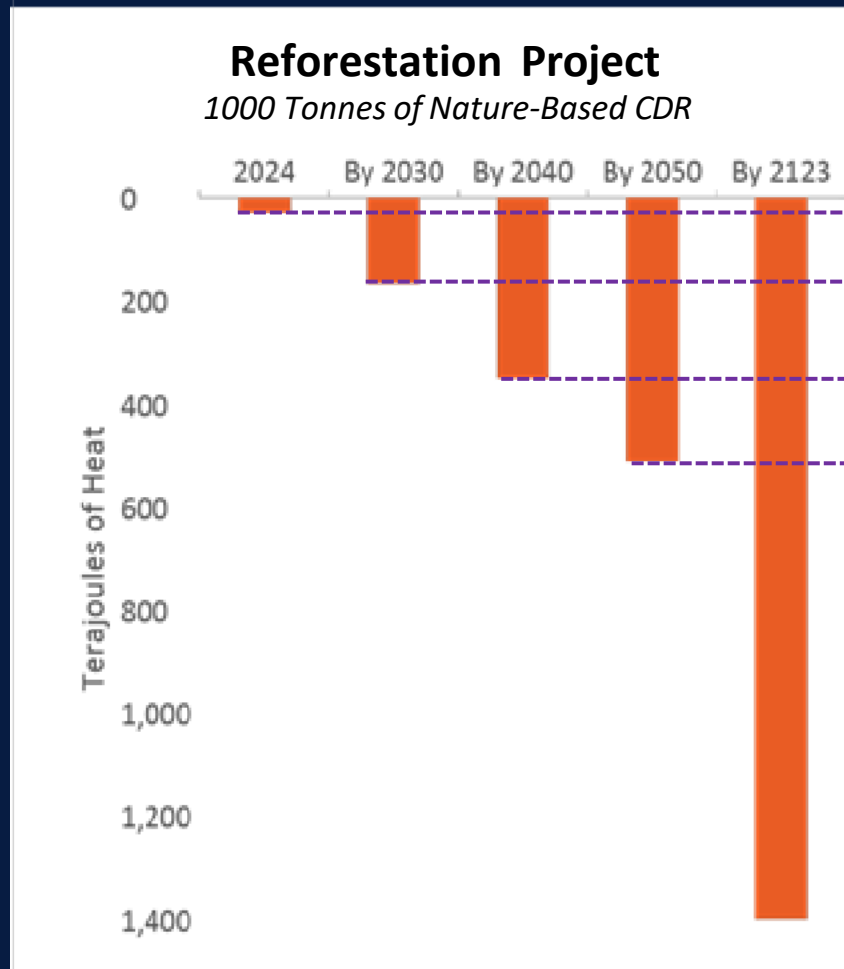
80x (over 20 years)

<150x (first year)

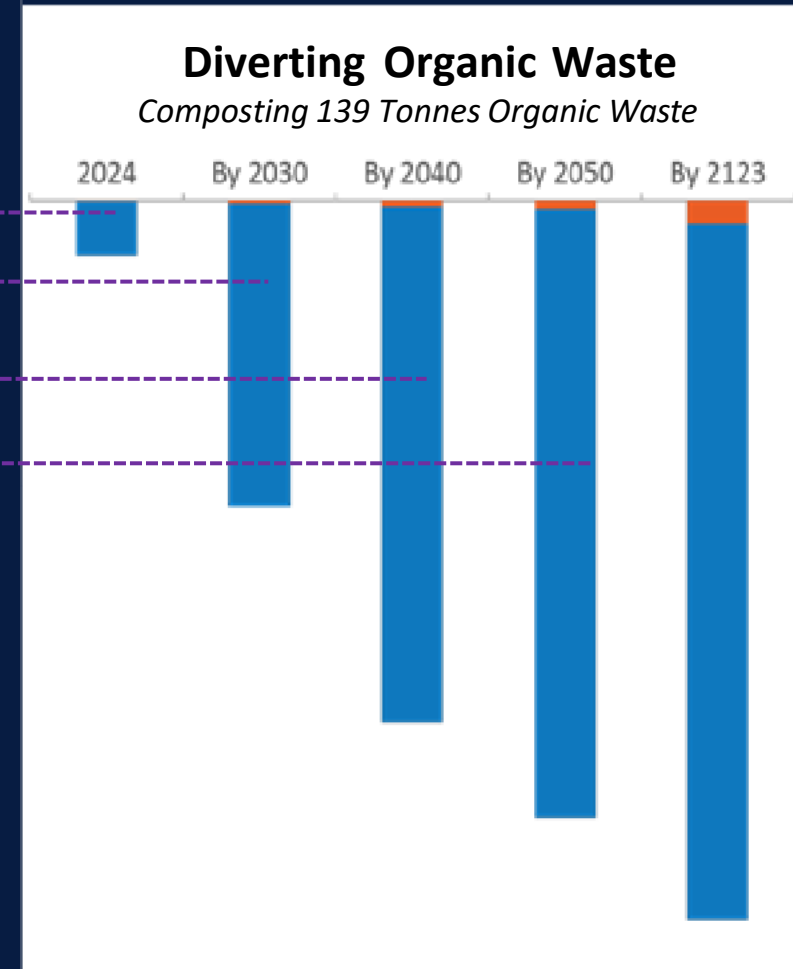
	Total Climate Accounting	Conventional Climate Accounting
CO ₂	✓	✓
Other LL GHGs	✓	✓
Methane and HFCs <i>< 150 x < 5,400 x</i>	✓ ALL relevant timeframes	✓ Typically over 100 years only
Black Carbon (soot) <i>< 52,000 x</i>	✓	
Ozone Precursors (smog) <i>Up to 1,200 x</i>	✓	
Negative heat drivers	✓	
Albedo	Coming	

Same Emissions Reduction ... Different Near-Term Heat Reduction Results

(1000 t CO₂e GWP 100)



Estimated Cost: \$1.4M-\$2.2M



Estimated cost: \$105k-205k

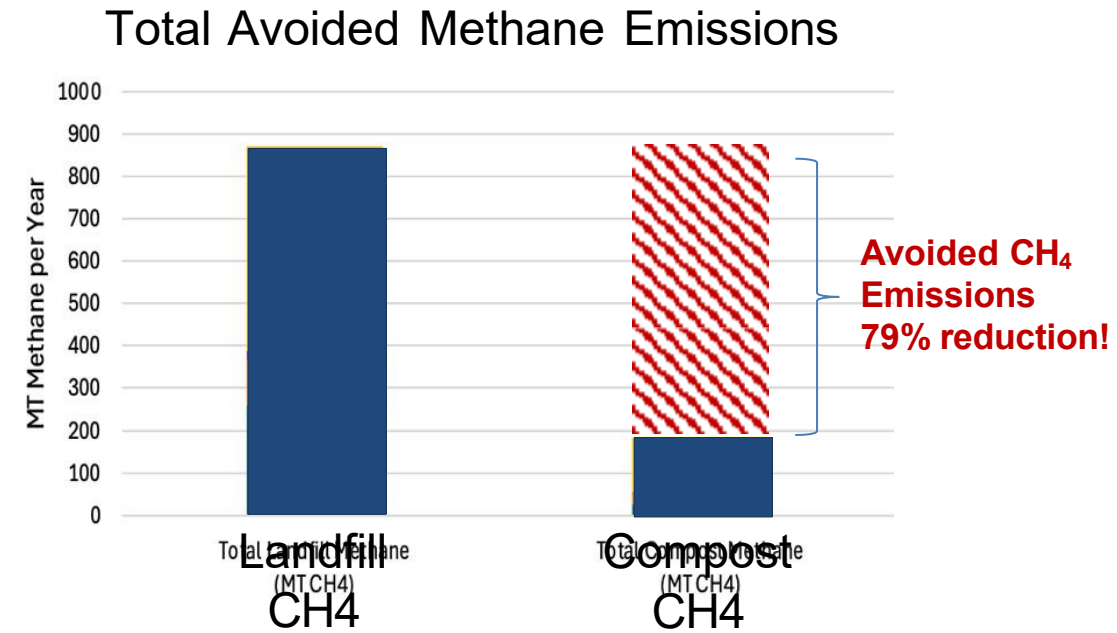
Carbon Dioxide
Methane



Total Climate Accounting Pilot Studies

- Heat impacts of agricultural crop re fields **BLACK CARBON**
- Heat reduction potential of plugging abandoned oil/gas wells **METHANE**
- Heat reduction from (1) composting anaerobic digester: NRWS (City of I

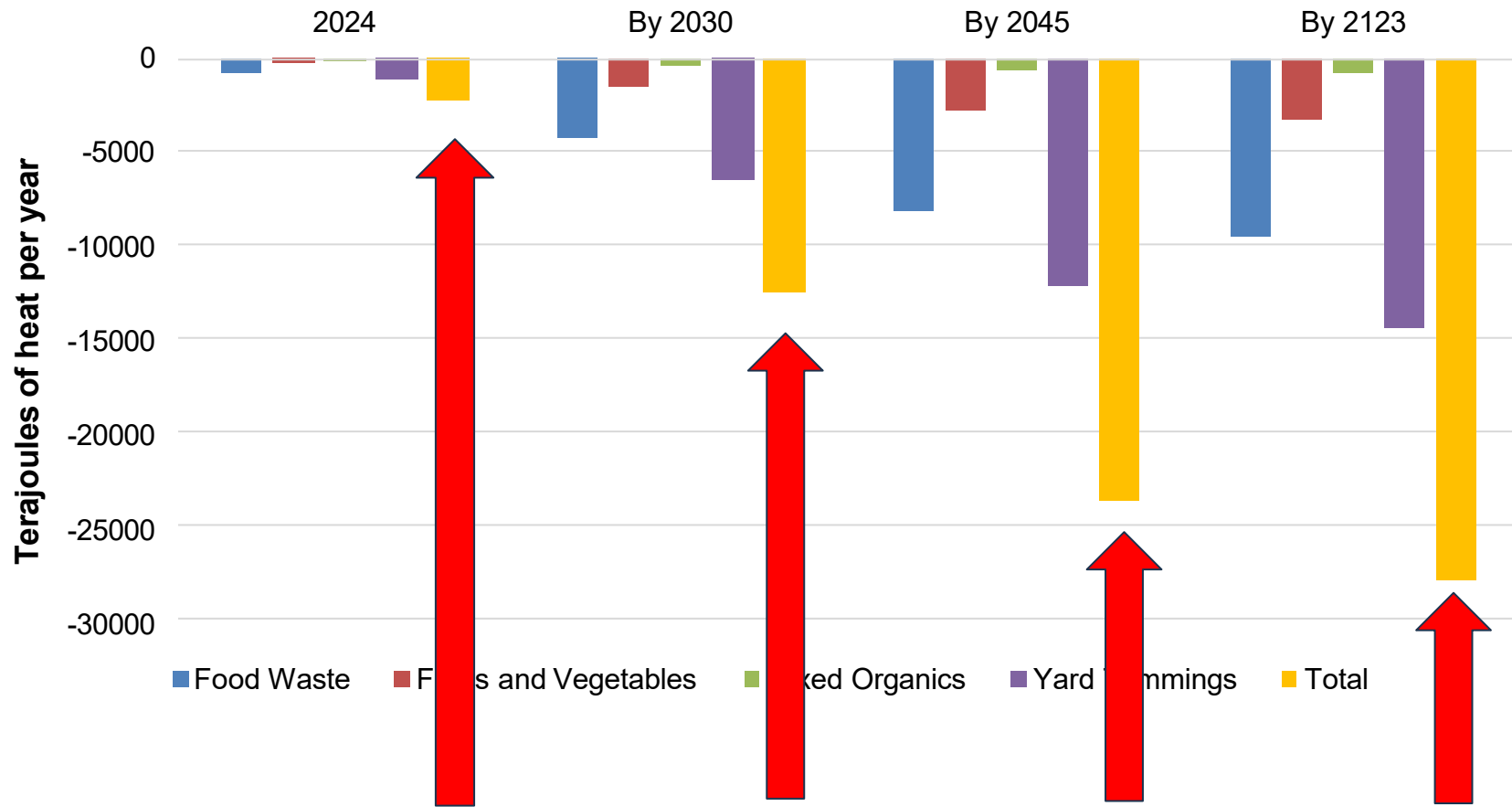
Avoided Methane Emissions due to Composting



**Total Avoided Methane Emissions:
688 metric tons (2024)
= 18,576 CO₂e (GWP 100)**

Twice the carbon footprint of the entire recycling & composting facility

Methane Heat Avoided by Composting in 2024



The contribution to atmospheric heat avoided from just one year of composting!



Major Take-Aways

1. **Every single year of composting** has huge implications for reducing heat impacts over the next 25 years.
2. This success will **rapidly multiply** as higher residential composting rates are achieved.
3. This heat reduction opportunity can now be compared to other RCAAP strategies for **speed, scale** and **Climate ROI** to help our local policymakers make better informed decisions.

Let's work together to more effectively
prioritize climate action to achieve the
greatest Climate ROI.

Thank you!



Linda Brown

Linda.Brown@heatreduction.com



Green Workforce Programs

Javier Montalbo, Customer Relations Manager
Workforce Development, MCE



Thursday, March 26th, 2026

Napa Climate Summit

Javier Montalbo



MCE Green Workforce Pathways

Contractor Benefits

- Contractors are vetted for high workforce standards
- Access to pre-vetted jobseekers at local community training organizations
- Bonuses when contractors hire from local community partners
- Receive cash stipends to attend electrification training



Partner
Association for Energy
Affordability

MCE Contractor Finder Tool

Find a Licensed Contractor

Take the guesswork out of finding contractors who are knowledgeable about the latest home improvement technologies. Use our tool to search for licensed and experienced contractors in your area.

Find local
Napa
Contractors

Remove filters

Name A-Z

Search...

Services

Battery Storage

Electrical Upgrades & Repair

Heat Pump HVAC

Heat Pump Water Heater

Home EV Charger

Counties Served

Contra Costa

Marin

Napa

Solano

A-1 Guaranteed Heating & Air Conditioning

Vallejo

[Website](#)

[\(866\) 883-8344](#)

[Email](#)

[License #](#)

Services:

- Electrical Upgrades & Repair
- Heat Pump HVAC
- Heat Pump Water Heater

Counties served:

Contra Costa
Napa
Solano

MCE customers served:
27

Offers MCE Rebate

AdamEck HVAC

Napa

[Website](#)

[\(707\) 330-5898](#)

[Email](#)

[License #](#)

Services:

- Heat Pump HVAC

Counties served:

Napa

MCE customers served:

-

Advanced Plumbing Heating and Air

Vacaville

[Website](#)

[\(707\) 908-8302](#)

[Email](#)

[License #](#)

Services:

- Electrical Upgrades & Repair
- Heat Pump HVAC
- Heat Pump Water Heater

Counties served:

Napa
Solano

MCE customers served:

-

MCE Green Workforce Pathways

Job Seeker Benefits

- Career Readiness Workshops and soft skills training for local construction training providers
- Also available in Spanish-led instruction
- Match job seekers with contractors for entry-level positions
- Job seekers are eligible for a retention bonus and stipends for tools or equipment



Partner
Strategic Energy
Innovations

MCE Green Workforce Pathways

Rebuilding Together East Bay Network

- Construction Technology Education (CTE) Program “Big Skills, Tiny Homes” at San Rafael High School.
- Pre-fab ADUs built over the academic year.
- Students receive cross-trades experience from framing to finishing.
- ADU’s are sold at discounted rates to local, low-to-moderate income households to help address housing crisis and build generational wealth.



Partner

Rebuilding Together East Bay
Network

MCE Workforce Development

Emerald Cities E-Contractor Academy

- Training for minority-women, disadvantaged business enterprise (MWDBE) contractors to perform clean energy projects
- Technical assistance and mentoring in the energy efficiency/residential decarbonization sector
- Capacity building for residential clean energy projects
- Post-academy business support and connection to professional services



Partners
Emerald Cities Collaborative
PG&E Energy Center

MCE Workforce Development

Napa Contractor Training

- In November 2025, MCE partnered with PACE Supply and BayREN in Napa
- Targeted training for local Napa contractors
- 9 local Napa contractors received heat pump water heater training
- Added to MCE's Contractor Finder Tool



Partners
PACE Supply in Napa
Bay Area Regional Energy
Network

MCE Workforce Development

Building a Napa Climate Workforce Initiative

- Consumer events
- Industry networking among clean energy practitioners around relevant topics
- Spanish-led training around energy efficiency and all-electric technologies in homes and buildings
- And more to come!



Partners

Association for Energy Affordability
Strategic Energy Innovations
Rebuilding Together East Bay Network
Emerald Cities Collaborative
PG&E Energy Center
PACE Supply
BayREN and so many others!



Thank you!



Javier Montalbo

Customer Programs Manager

Workforce Development

925.378.6751

jmontalbo@MCEcleanenergy.org



**Please join us in the lobby for refreshments
and more opportunities for engagement**

**Thank you for being part of Summit #4
See you next year at Summit #5**

*A vibrant, fair, and regenerative future is possible —
not when thousands of people do climate justice perfectly
but when millions of people do the best they can.*

~ Xiye Bastida, 'Calling in'