

Committed to Climate Action in California

Chris Benjamin
Director, Corporate Sustainability
PG&E
May 24, 2023





Committed to Climate Action in California



Need for climate action: From extreme weather to rising tides, California—like the rest of the planet—is experiencing the significant and increasing effects of a changing climate.



Clean energy future for all: We're committed to bringing about a clean energy future in partnership with the customers and communities we serve.



Triple bottom line: We approach this work through the framework of serving People, the Planet, and California's Prosperity.





Recent Highlights



Delivered clean electricity to customers that was 95%+ greenhouse gas emissions-free.



Awarded contracts for more than 3,300 MWs of battery energy storage to be deployed over the next several years.



Installed ~340 charging ports for electric vehicles at schools, parks, public charging locations, and in support of fleets—with nearly half in disadvantaged communities.

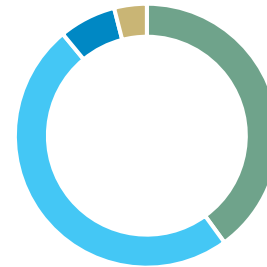


Helped customers avoid 675,000+ metric tons of carbon emissions and energy costs through robust energy efficiency programs.



Reached 24% methane emissions reductions from our gas system, relative to 2015—exceeding the state’s 20% requirement two years early

2022 Electric Power Mix



40%	Renewable [†]
49%	Nuclear [†]
7%	Large Hydro [†]
4%	Natural Gas

[†] These resources are greenhouse gas-free and/or renewable.

About **1 in 6** of all EVs in the U.S. is in PG&E’s service area.

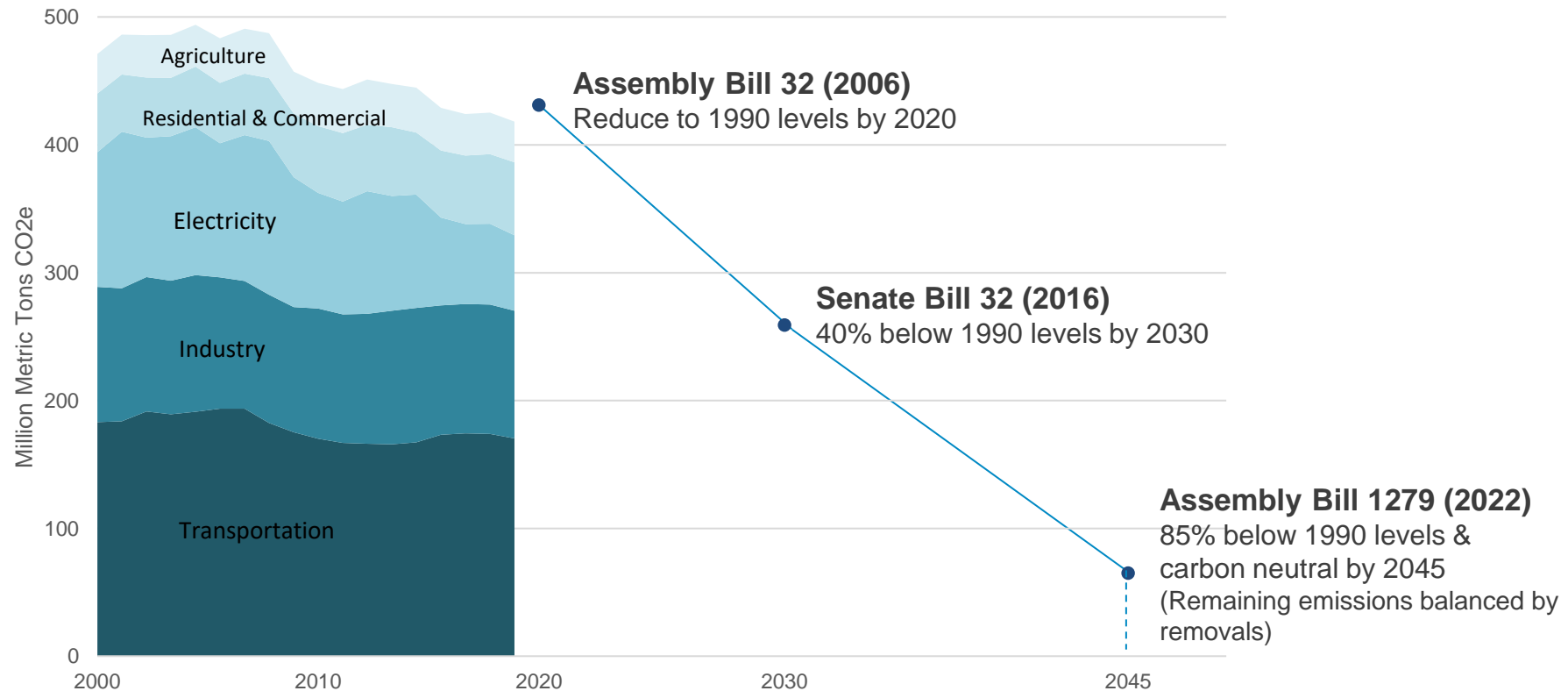
About **1 in 5** of all solar rooftops is in PG&E’s service area.



California's 2045 Carbon Neutrality Goal



California has a statewide goal to achieve economy-wide carbon neutrality by 2045 and to maintain net negative emissions thereafter.

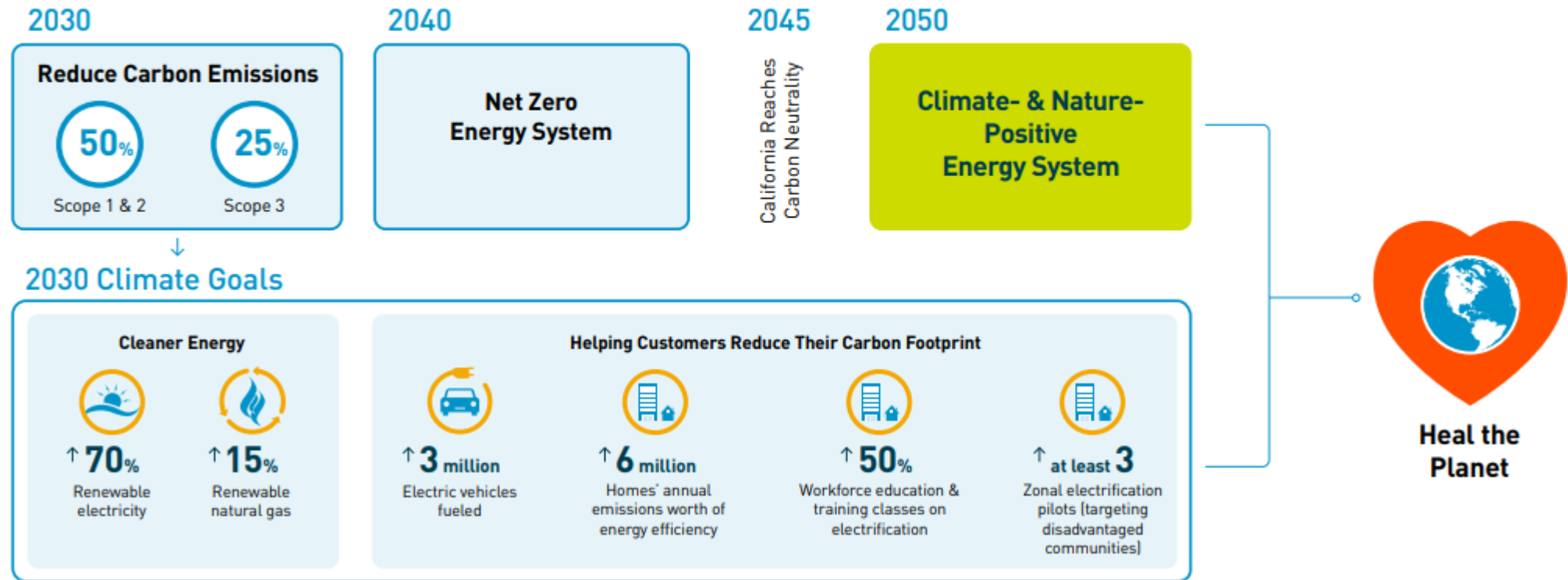




PG&E's Climate Goals

Our Commitment: Helping to Heal the Planet

Leading an equitable and viable transition that leaves no one behind



Notes:

Scope 1: *Direct* emissions from PG&E's operations.

Scope 2: *Indirect* emissions from facility electricity use and electric line losses.

Scope 3: Emissions resulting from *value chain activities* not owned or controlled by PG&E but that can be indirectly impacted by PG&E actions.

"Scope 4": An emerging term for categorizing emission reductions enabled by a company. PG&E can make a significant contribution by enabling these emission reductions in our service area.



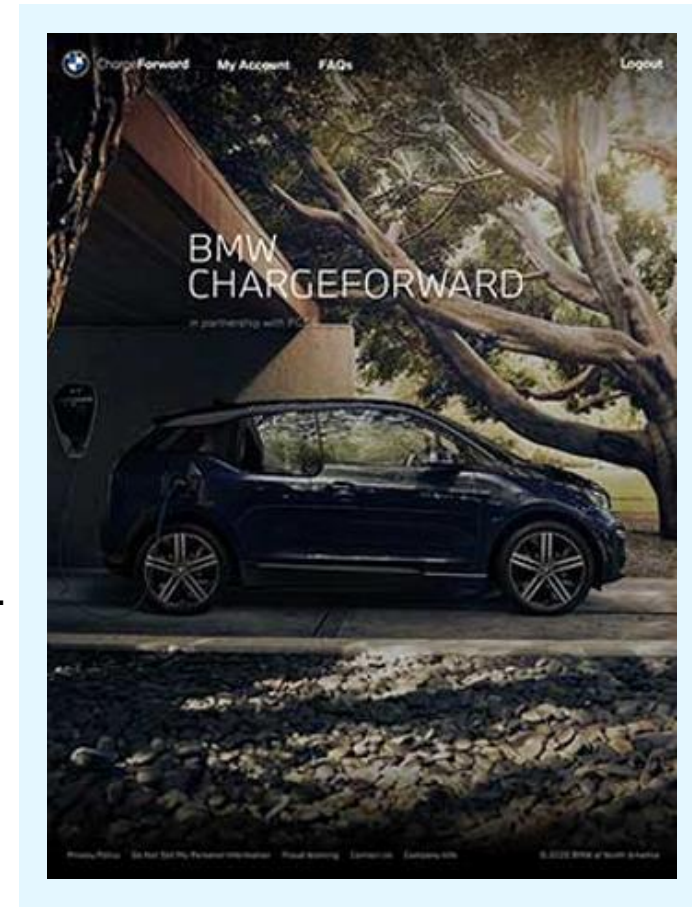
We're partnering with industry leaders to advance vehicle-grid innovation at scale:

- **GM EVs** as on-demand power sources for homes.
- **Ford's F-150 Lightning EV** to provide electric reliability benefits.
- **BMW** to test how vehicle-to-everything (V2X) technology can improve grid reliability.



We continue to implement a suite of EV charging programs:

- **EV Fleet:** Support adoption of 6,500 medium- & heavy-duty EVs, investing at least 25% of infrastructure budget in disadvantaged communities (DACs).
- **EV Schools and Parks:** Charging infrastructure at ~22 schools & 15 state parks, with at least 25% of state park sites & 40% of school sites in DACs.
- **EV Fast Charge:** Install 30 to 40 sites for DC fast charging in corridor and urban sites, with at least 25% of the sites in or adjacent to DACs.
- **Empower EV:** Education and rebates for EV chargers, charger installation, and panel upgrades for income-qualified residential customers.



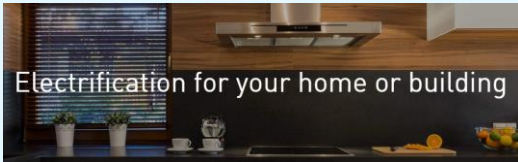


PG&E is Here to Help



We want to help you meet your climate goals and your unique energy needs.

**Learn about
electrification**



pge.com/electrification

**Learn about electric
vehicles**



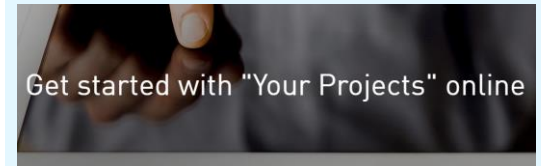
ev.pge.com
fleets.pge.com

**Learn about products
and programs**



guide.pge.com

**Use "Your Projects" if
you're building or
renovating**



yourprojects-pge.com

Grants Totaling \$900,000 from The PG&E Corporation Foundation and PG&E Available to Support Environmental Stewardship, Climate Resilience (applications due June 30): www.pgecurrents.com

Resilience Hubs Grant Program

Nature Positive Innovation Grant Program