



# Moving the Needle to Zero Transportation Emissions

**Climate Action Summit**

**Wednesday, May 24, 2023**

**Presented by: Kate Miller, Executive Director**



# Introduction



**NVTA is a Joint Powers Authority comprised of the Cities, Town, and County of Napa**

**NVTA is responsible for:**

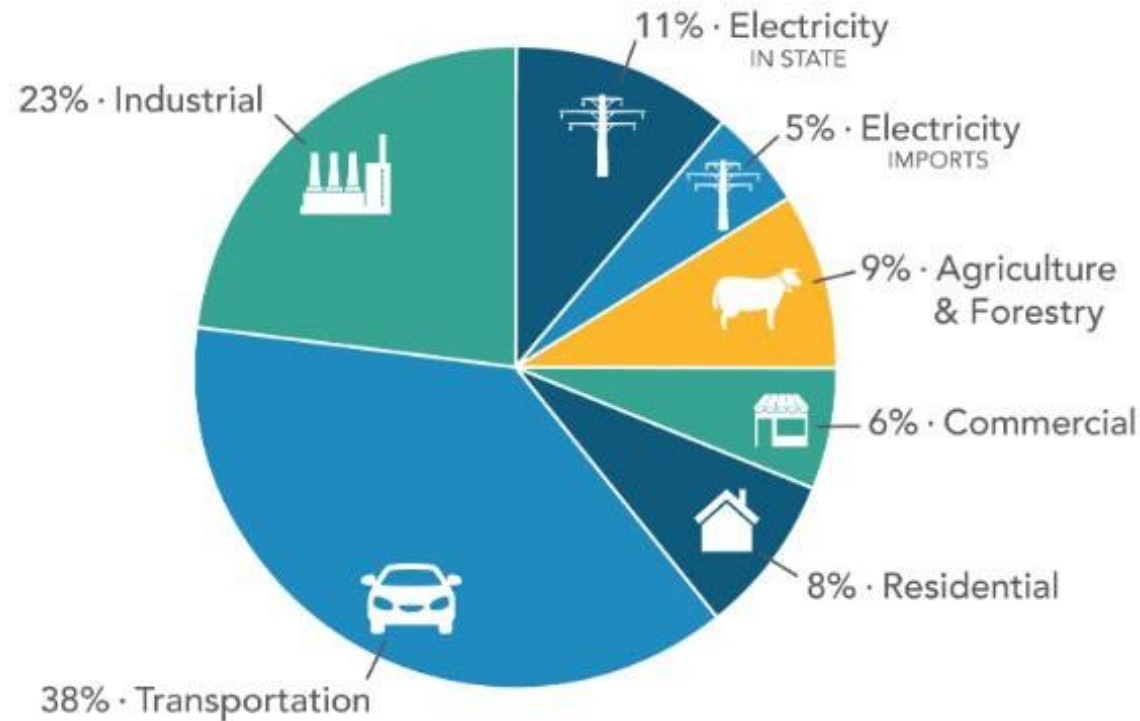
- Administering Measure T –½ cent sales tax for transportation
- Countywide transportation planning
- Administering the Vine Transit System
- Distributing transportation funds
- Coordinating highway improvements with Caltrans
- Administering multi-jurisdictional projects



# GHG emissions in the Bay Area



Transportation accounts for **38%** of the total Greenhouse Gas (GHG) emissions in the Bay Area



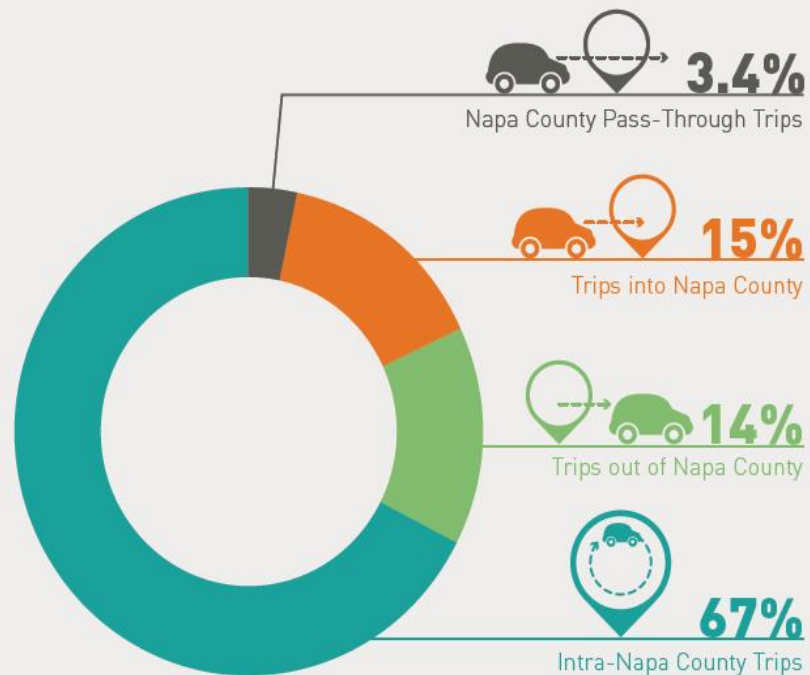
369.2 MMT CO<sub>2</sub>e  
2020 TOTAL CA EMISSIONS

# How and where Napa Valley travels



**67% of auto trips in Napa County begin and end in Napa County**

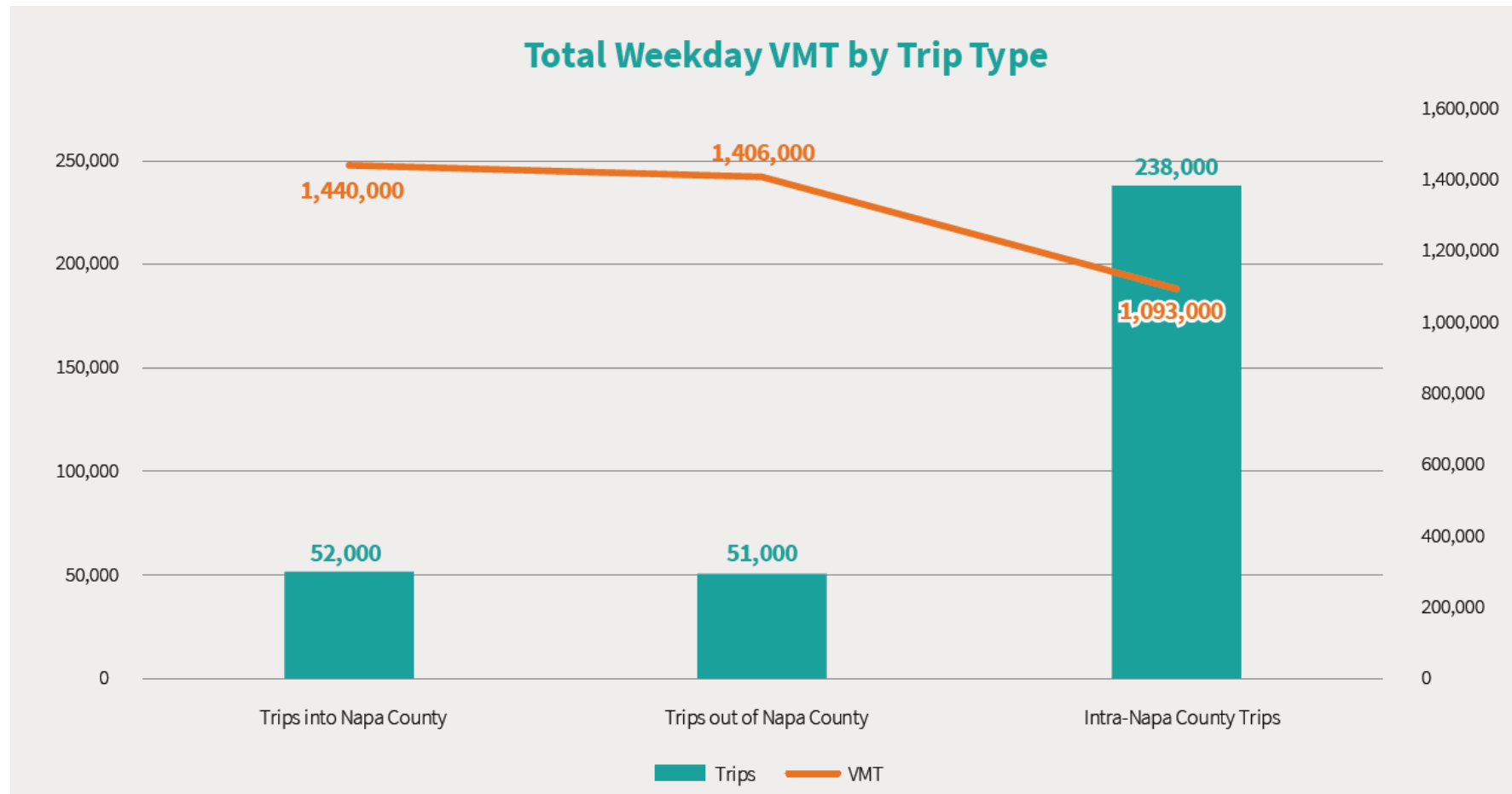
## What Types of Trips are Occuring within Napa County on a Weekday?



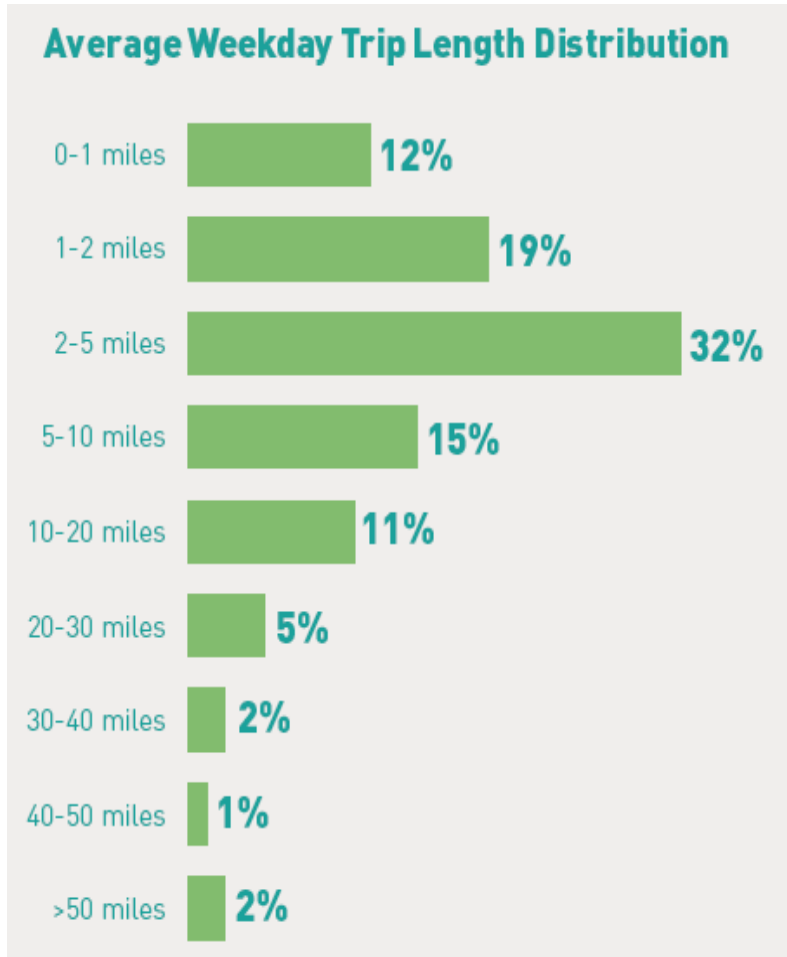
# How and where Napa Valley travels



Weekday, we travel roughly 1.1 million auto miles **inside** Napa County and a **total** of 1.44 million miles!



## Opportunities for *Mode Shift*



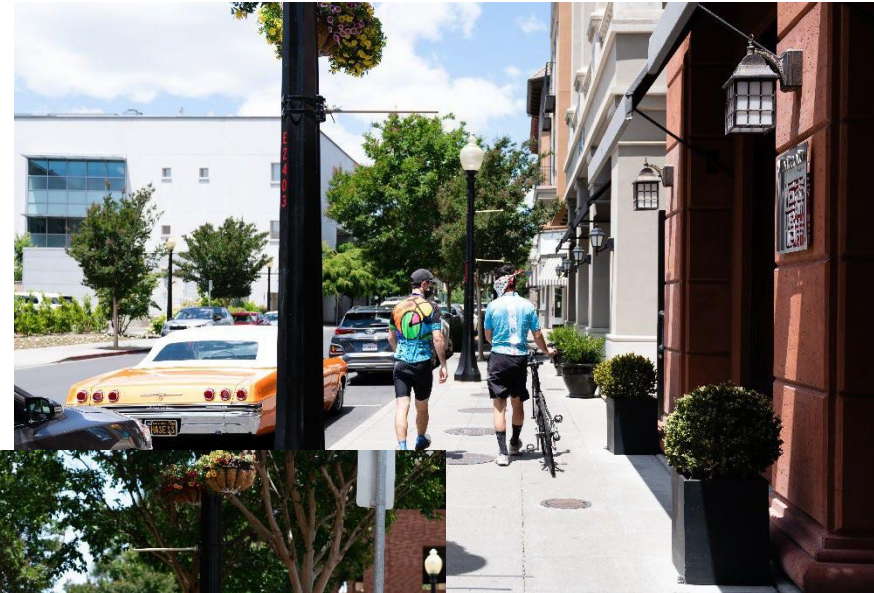
**63% of the trips we make in Napa Valley are 5 miles or less!**



# Reducing CO<sub>2</sub> emissions through Mode Shift



If we shift just 10% of auto trips to other modes, we eliminate 64.1 tons of CO<sub>2</sub> emissions each day.



\*Based on 404 grams of CO<sub>2</sub> per mile

# NVTA tools to encourage Mode Shift



**Travel Demand Management (TDM)** TDM consists of programs and projects that offer options to driving alone to reduce vehicle miles traveled, reduce emissions, and relieve traffic congestion.

**V-Commute is NVTA's TDM support program** <https://vcommute.org/>

- ★ **Bike Subsidies**
- ★ **Carpool and Ridesharing Support**
- ★ **Guaranteed Ride Home**

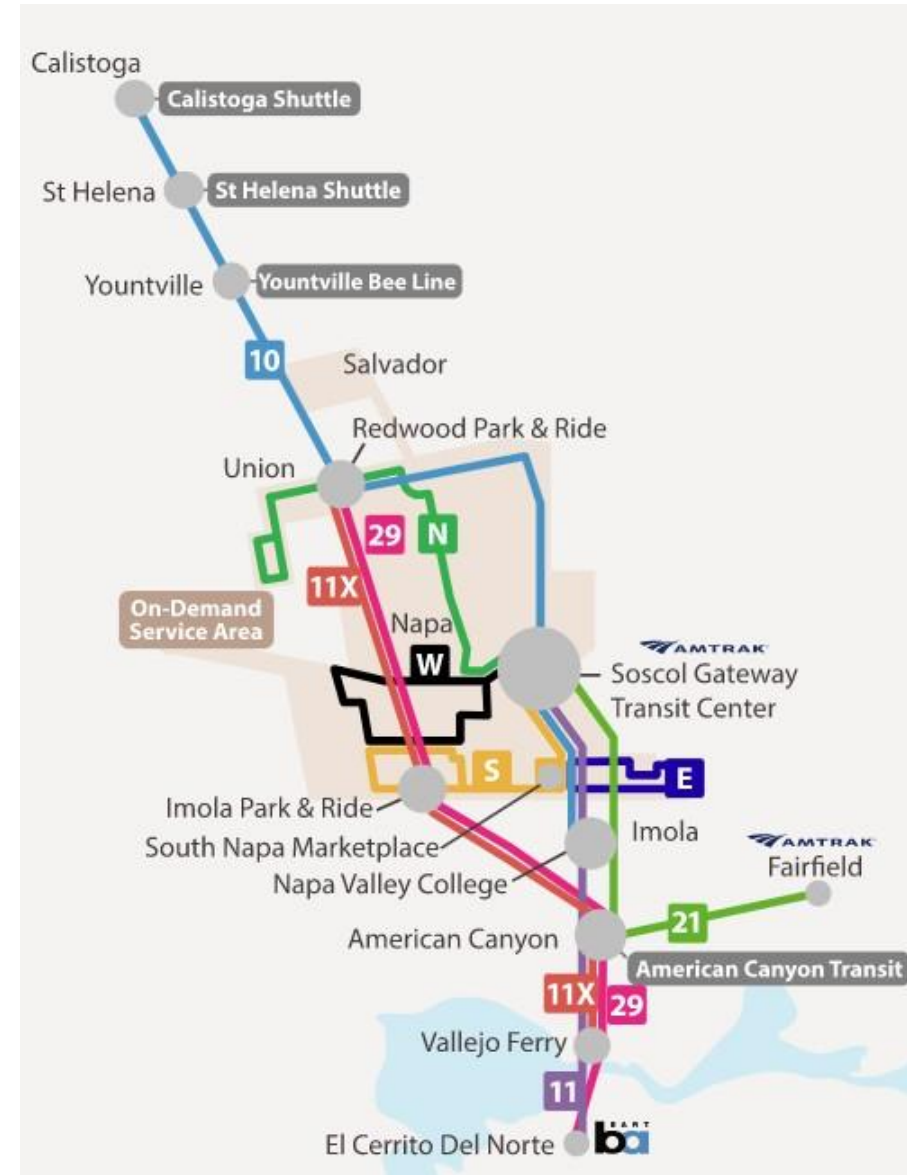


V-Commute promotes transportation alternatives using the **Ride Amigos** technology platform.



## Vine Transit

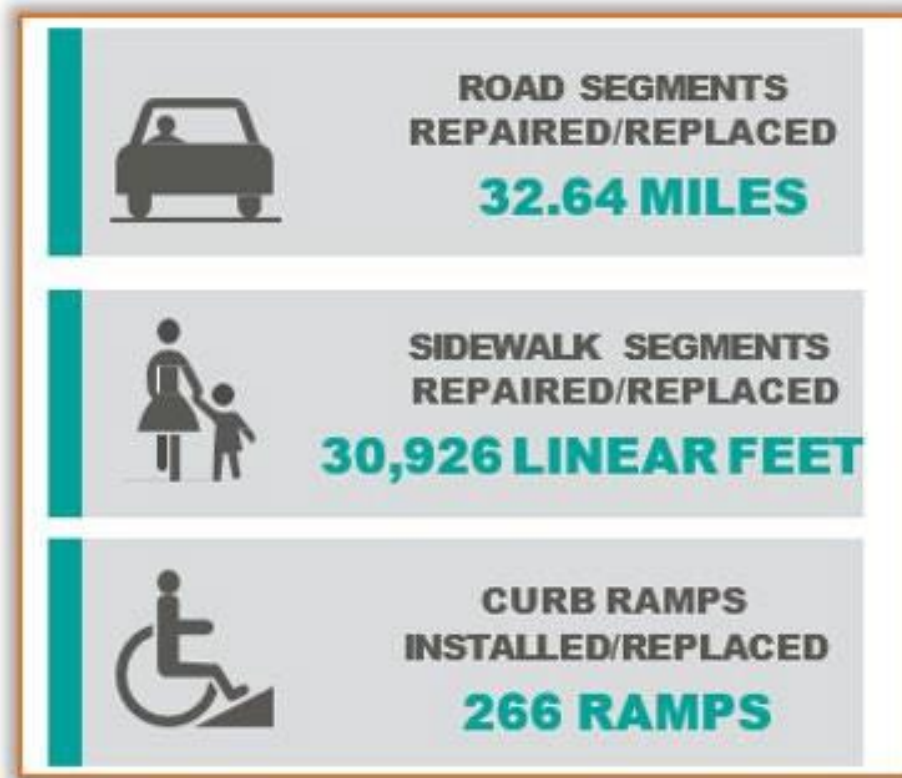
- 1.1 million passenger trips in 2019
- Routes to BART, Amtrak Capital Corridor/ SF Ferry
- Regional routes that serve the Valley
- Shuttle services that are free or reduced fare
- 4 Fixed Route and Stop to Stop on Demand in the City of Napa



# Reducing CO<sub>2</sub> emissions by improving and maintaining transportation infrastructure



Smooth roads reduce emissions by reducing friction and complete street improvements provide facilities and improve safety to encourage alternative modes

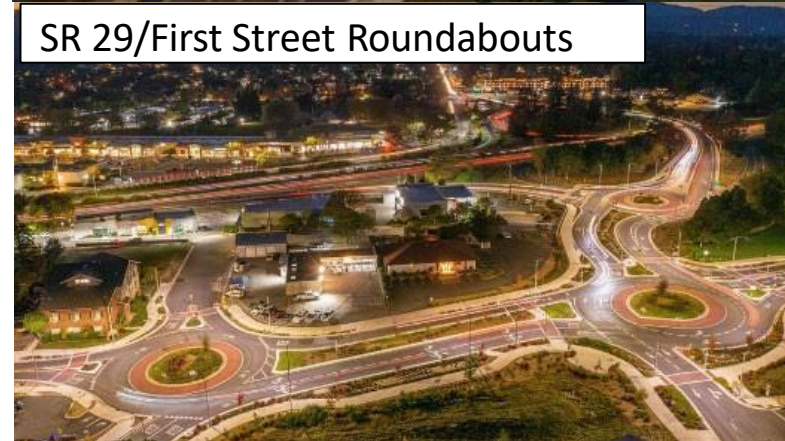


**NVTA administers Measure T, the ½ cent sales tax for local street road maintenance**



## Roundabouts Improve Safety, Reduce Congestion and Related CO<sub>2</sub> Emissions

- Funding is limited for capacity projects and capacity comes with a very high bar (congestion pricing)
- NVRTA has focused more on highway operational improvements – improvements that reduce congestion, increase safety, and improve access to bicycles and pedestrians and do not induce new traffic demand
- Highway improvements that reduce congestion include directional grade separation, roundabouts, parallel traffic circulation enhancements, high occupancy improvements (queue jumps)



# Reducing CO<sub>2</sub> emissions by improving and maintaining transportation infrastructure



Complete streets and road diets improve safety, encourage modal shift, and reduce CO<sub>2</sub> Emissions

**Imola Complete Streets –  
Planned Improvements**



**SR 29 American Canyon  
Multi-modal  
Improvements**

# Vine Transit



**A complete greening of the Vine Fleet will result in eliminating over 1047 tons of CO2 emissions annually**



**NVTA currently has 8 electric buses and \$14 million to purchase 14 more buses and charging stations.**

The *new* Vine Bus Maintenance Facility will be equipped with a photovoltaic system for electric bus charging and a Hydrogen-Ready Maintenance Bay



**In 2019 NVTA, provided 1.1 million passenger trips traveling 7.7 million miles – reducing CO2 by roughly 29,000 tons.**

# What else can we ALL do?



- Trip Chain
- Don't idle your car
- Ride the bus, walk or ride a bike
- Carpool to school or work
- Ride-Share to work or school
- Avoid driving during peak traffic periods



# Thank You!

Kate Miller, Executive Director

Email: [kmiller@nvta.ca.gov](mailto:kmiller@nvta.ca.gov)

Phone: (707) 259-8634

